

NOTICE TO HIKERS

Title of Notice: North Three Lakes Reroute

Submitters Name: Kelly Wiener

Submitters Title: C/S Regional Rep

Phone: 518-369-9057

Email: kellyw@floridatrail.org

Region: Central

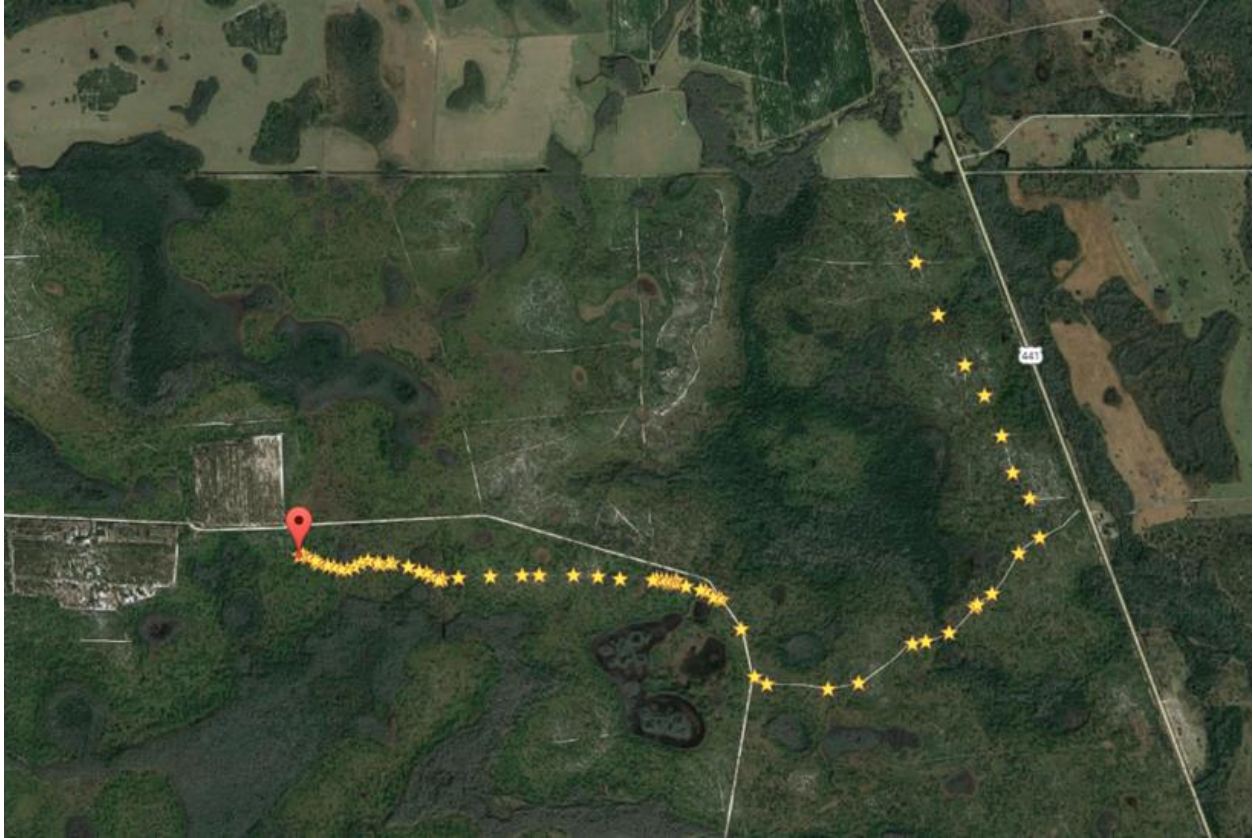
FTA Map No. 33

Perm. Change? Yes

Effective Date: 12/30/2016

Description/Map:

The trail section in Three Lakes WMA, through Gatorback Slough has been rerouted due to wet, muddy conditions making the area difficult to maintain and hike. The reroute takes advantage of existing park roads. It leaves the current FSNT just west of 441, then swings around the slough to the south and re-joins the trail east the Three Lakes campsite. See map with waypoints, as well as coordinates of those waypoints below. A GPS line will be collected in the near future for the 2017 map update and will be added here when available.



Latitude Longitude

27.98079 -81.0521
27.9808 -81.0519
27.98071 -81.0518
27.98055 -81.0514
27.98047 -81.0512
27.98046 -81.0511
27.98036 -81.0508
27.98031 -81.0504
27.98017 -81.0501
27.98016 -81.0498
27.98029 -81.0494
27.98045 -81.0491
27.98058 -81.0487
27.98048 -81.0483
27.98039 -81.0481
27.98044 -81.0477
27.98046 -81.0475
27.98027 -81.0467
27.98007 -81.0462
27.98 -81.0458
27.97984 -81.0456
27.97973 -81.0452
27.97978 -81.045
27.9798 -81.0443
27.97986 -81.0426
27.97993 -81.0411

27.97993 -81.0403
27.9799 -81.0385
27.97985 -81.0373
27.97977 -81.0363
27.97969 -81.0346
27.97968 -81.0346
27.97974 -81.0344
27.97973 -81.0342
27.97968 -81.0339
27.97957 -81.0338
27.97959 -81.0337
27.97962 -81.0335
27.9797 -81.0334
27.97941 -81.033
27.97927 -81.0322
27.97919 -81.032
27.97895 -81.0316
27.97891 -81.0313
27.97884 -81.0312
27.97754 -81.0302
27.97544 -81.0295
27.97516 -81.0289
27.97494 -81.0259
27.97521 -81.0244
27.97692 -81.0217
27.97701 -81.021
27.97737 -81.0198

27.97852 -81.0186
27.97863 -81.0185
27.97911 -81.0178
27.98089 -81.0164
27.98158 -81.0154
27.9833 -81.0159
27.98442 -81.0167
27.98606 -81.0173
27.9878 -81.0181
27.98913 -81.0191
27.99134 -81.0204
27.99366 -81.0215
27.99571 -81.0223