

Congressional Report



2020 117th Congress

ALABAMA

GEORGIA



- Florida National Scenic Trail
- Reroute in Development
- Side Trail
- Roadwalk

Public Conservation Lands

- Federal Lands
- State & Local Lands



Like on Facebook: facebook.com/floridatrailassociation



Follow on Twitter: twitter.com/floridatrail



See on Instagram: instagram.com/floridatrail



Watch on Youtube: youtube.com/floridatrail



Connect With Us

Florida Trail Association

Building More Than Trails

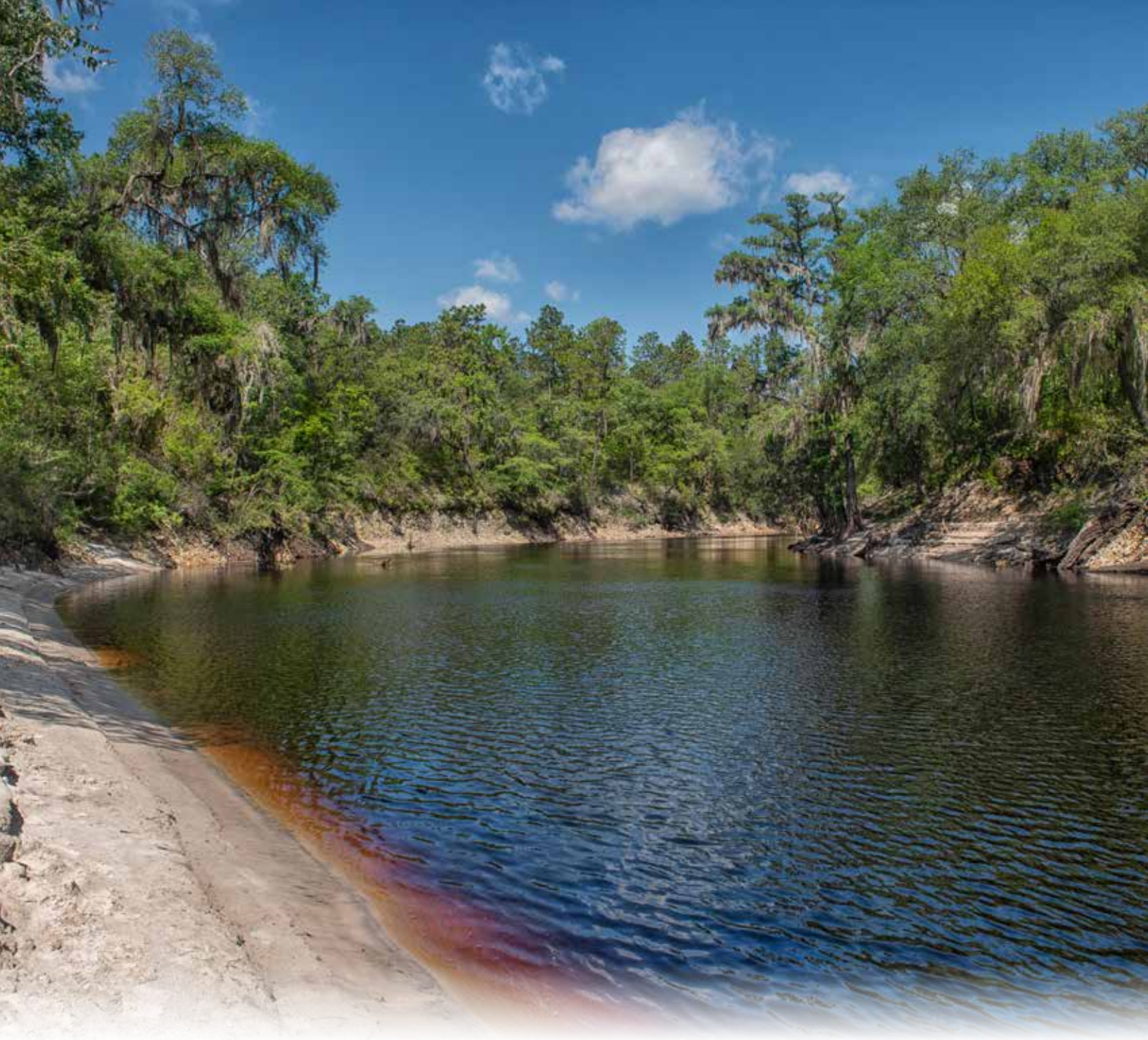
1050 NW 2nd St
Gainesville, FL 32601
web: floridatrail.org
email: FTA@floridatrail.org
phone: 352-378-8823

The Florida Trail is Open To All

The Florida Trail is a 1,500-mile footpath that extends from Big Cypress National Preserve at the edge of the Everglades in south Florida to Gulf Islands National Seashore on Santa Rosa Island in the Florida panhandle.

Hike our white sand beaches. Travel through dense subtropical forests and vast, open grasslands. Test your physical and mental endurance in Florida's swamps, marshes and wetlands. Encounter the diverse plant and animal life that flourish along the Florida Trail.

The Florida Trail is non-partisan public resource that needs your support.



Meet the Florida Trail Association

The 90th US Congress passed the National Trail Systems Act in 1968. This Act authorized the creation of a national system of trails “to promote the preservation of, public access to, travel within, and enjoyment and appreciation of the open-air, outdoor areas and historic resources of the Nation.” It initially established the Appalachian Trail and Pacific Crest Trails.

Today the National Trails System designates 11 National Scenic Trails, including the entirely unique Florida Trail. The Florida Trail is a National Scenic Trail spanning 1,500 miles from the Panhandle to the Everglades, offering year-round hiking for residents and visitors. The Florida Trail is more than a path through the woods—it’s an outdoor experience that connects Florida’s unique natural, cultural and historic resources.

The Florida Trail is a product of the successful collaboration between the USDA Forest Service, land-managing partners and dedicated volunteers and staff from the Florida Trail Association, who recognize the need for long-distance hiking opportunities in Florida and come together to manage, promote, and steward the trail.



District 1

The Honorable Matt Gaetz

The Florida Trail in District 1 highlights the uniquely effective partnership between **Federal, State, County** and **Private** landowners currently under agreement with the USDA Forest Service to host the Florida National Scenic Trail.

The Florida Trail in District 1 is a Non-Partisan Public Resource that needs your support.

District 1 Constituency Engagement in 2020

Hours Donated in 2020: **3,141**

Dollar Value of Hours Donated in 2020: **\$85,435.20**

Residents of Your Congressional District Spend **\$1.68** Billion on Outdoor Recreation Each Year

The Florida Trail in District 1 is hosted by:

Gulf Islands National Seashore – **Federal**

Santa Rosa Island Authority – **County**

Eglin Air Force Base – **Federal**

North West Florida Water Management District – **State**

Yellow River WMA

Lafayette Creek WMA

Choctawhatchee River WMA

Florida Forest Service – **State**

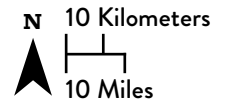
Blackwater River SF

MC Davis Conservation Easement – **Private**

Nokuse Plantation



 Florida National Scenic Trail
 Side Trail



Gateway Communities:

Pensacola Beach

Proposed Gateway Communities:

Navarre, Holt, Crestview,

Defuniak Springs, Freeport, Bruce

A Gateway Community is a designated town in close proximity to the Florida Trail that offers resources for hikers such as accommodations, restaurants, grocery stores or laundry. For the community, it provides publicity, tourism, and economic growth.





District 2

Dr. Neal Dunn

The Florida Trail in District 2 highlights the uniquely effective partnership between **Federal** and **State** landowners currently under agreement with the USDA Forest Service to host the Florida National Scenic Trail.

The Florida Trail in District 2 is a Non-Partisan Public Resource that needs your support.

District 2 Constituency Engagement in 2020

Hours Donated in 2020: **752**

Dollar Value of Hours Donated in 2020: **\$20,454.40**

Residents of Your Congressional District Spend **\$1.61** Billion on Outdoor Recreation Each Year

The Florida Trail in District 2 is hosted by:

North West Florida Water Management District – **State**

Choctawhatchee River WMA

Econfina Creek WMA

Suwannee River Water Management District – **State**

Middle Aucilla WMA

Suwannee Valley CA

Florida Forest Service – **State**

Pine Log SF

USDA Forest Service – **Federal**

St. Joe Tract

Apalachicola National Forest

Rainbow Tract

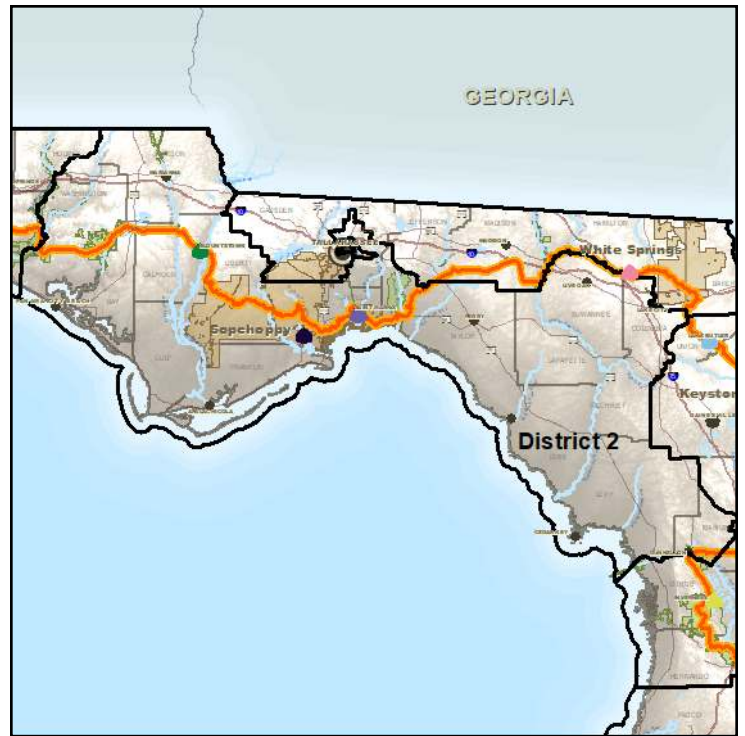
Williams Tract

USDI Fish and Wildlife Service – **Federal**

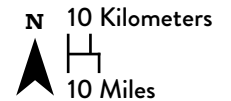
St. Marks National Wildlife Refuge

Florida Fish and Wildlife Conservation Commission – **State**

Aucilla WMA



 Florida National Scenic Trail
 Proposed Reroute in Planning



Gateway Communities:

Blountstown, Sopchoppy, St. Marks

Proposed Gateway Communities:

Bristol, Crawfordville, Altha



A Gateway Community is a designated town in close proximity to the Florida Trail that offers resources for hikers such as accommodations, restaurants, grocery stores or laundry. For the community, it provides publicity, tourism, and economic growth.





District 3

The Honorable Kat Cammack

The Florida Trail in District 3 highlights the uniquely effective partnership between **Federal, State, and Private** landowners currently under agreement with the USDA Forest Service to host the Florida National Scenic Trail.

The Florida Trail in District 3 is a Non-Partisan Public Resource that needs your support.

District 3 Constituency Engagement in 2020

Hours Donated in 2020: **1,174**

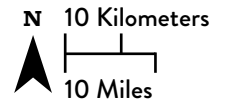
Dollar Value of Hours Donated in 2020: **\$31,932.80**

Residents of Your Congressional District Spend

\$1.68 Billion on Outdoor Recreation Each Year



Florida National Scenic Trail



The Florida Trail in District 3 is hosted by:

- Florida Department of Environmental Protection – **State**
 - Palatka-Lake Butler Trail
 - Mike Roess Gold Head Branch SP
 - Marjorie Harris Carr Cross FL Greenway R & CA
- US Department of Defense – **Federal**
 - Camp Blanding Military Reservation
- USDA Forest Service – **Federal**
 - Ocala NF
- Florida Forest Service – **State**
 - Etoniah Creek State Forest
- Meyerhaeuser Timber – **Private**
 - Plum Creek Tract
- St Johns River Water Management District – **State**
 - Rice Creek CA
- Less-Than-Fee Access Easements – **Private**

Gateway Communities:

Keystone Heights, Lake Butler

Proposed Gateway Communities:

Palatka



A Gateway Community is a designated town in close proximity to the Florida Trail that offers resources for hikers such as accommodations, restaurants, grocery stores or laundry. For the community, it provides publicity, tourism, and economic growth.



District 5

The Honorable Al Lawson

The Florida Trail in District 5 highlights the uniquely effective partnership between **Federal, State, Local** and **Private** landowners currently under agreement with the USDA Forest Service to host the Florida National Scenic Trail.

The Florida Trail in District 5 is a Non-Partisan Public Resource that needs your support.

District 5 Constituency Engagement in 2020

Hours Donated in 2020: **2,573.7**

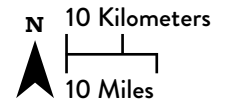
Dollar Value of Hours Donated in 2020: **\$70,005.55**

Residents of Your Congressional District Spend

\$1.36 Billion on Outdoor Recreation Each Year



 **Florida National Scenic Trail**
 **Proposed Reroute in Planning**



The Florida Trail in District 5 is hosted by:

Florida Forest Service – **State**

Twin Rivers SF

Florida Department of Environmental Protection – **State**

Suwannee River State Park

Stephen Foster Folk Culture Center SP

Big Shoals State Park

Olustee Battlefield Historic SP

USDA Forest Service – **Federal**

Goolsby, Donaldson, Richards, Latus Tracts

Suwannee River Farms MA

Osceola NF

Suwannee River Water Management District – **State**

Lower Alapaha, Holton Creek, Camp Branch CAs

Swift Creek CA

Deep Creek CA

Less-Than-Fee Access Easements – **Private**

Town of White Springs – **Township**

Gateway Communities:

White Springs

Proposed Gateway Communities:

Hosford



A Gateway Community is a designated town in close proximity to the Florida Trail that offers resources for hikers such as accommodations, restaurants, grocery stores or laundry. For the community, it provides publicity, tourism, and economic growth.



District 6

The Honorable Michael Waltz

The Florida Trail in District 6 highlights the uniquely effective partnership between **Federal**, **State**, and **Private** landowners currently under agreement with the USDA Forest Service to host the Florida National Scenic Trail.

The Florida Trail in District 6 is a Non-Partisan Public Resource that needs your support.

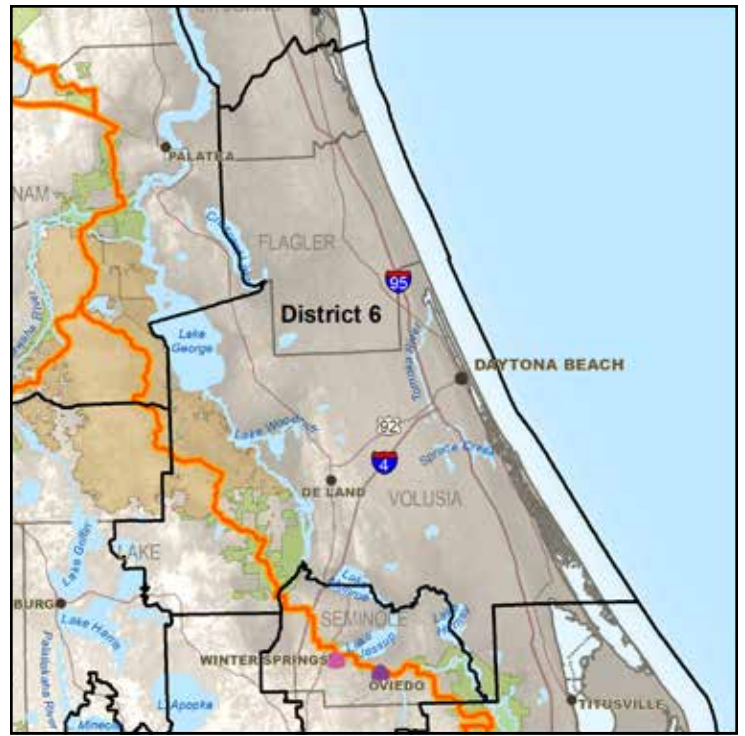
District 6 Constituency Engagement in 2020

Hours Donated in 2020: **7,418**

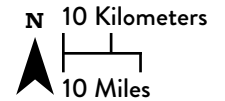
Dollar Value of Hours Donated in 2020: **\$201,788**

Residents of Your Congressional District Spend

\$1.76 Billion on Outdoor Recreation Each Year



Florida National Scenic Trail



The Florida Trail in District 6 is hosted by:

USDA Forest Service – **Federal**
Ocala NF

Oriante Center for Indigo Conservation – **Private**

Boy Scouts of America – **Private**
Camp La No Che

Florida Forest Service – **State**
Seminole State Forest



Proposed Gateway Communities: Paisley

A Gateway Community is a designated town in close proximity to the Florida Trail that offers resources for hikers such as accommodations, restaurants, grocery stores or laundry. For the community, it provides publicity, tourism, and economic growth.



PAISLEY, FLORIDA-JULY 26, 2017: At Clearwater Lake Recreation Area in Ocala National Forest, a marker denotes the birth of the Florida Trail, designated the Florida National Scenic Trail in 1983.



District 7

The Honorable Stephanie Murphy

The Florida Trail in District 7 highlights the uniquely effective partnership between **Federal, State, County** and **City** landowners currently under agreement with the USDA Forest Service to host the Florida National Scenic Trail.

The Florida Trail in District 7 is a Non-Partisan Public Resource that needs your support.

District 7 Constituency Engagement in 2018

Hours Donated in 2020: **1,337**

Dollar Value of Hours Donated in 2020: **\$36,365**

Residents of Your Congressional District Spend

\$1.73 Billion on Outdoor Recreation Each Year

The Florida Trail in District 7 is hosted by:

Seminole County – **County**

- Chuluota Wilderness
- Lucas Tract
- Wekiva Trail
- Cross Seminole Trail
- Spring Hammock Preserve
- Black Hammock Trail Head

Florida Department of Environmental Protection – **State**

- Lower Wekiva River Preserve SP

City of Oviedo – **City**

Florida Forest Service – **State**

- Little Big Econ State Forest

USDA Forest Service – **Federal**

- Mills Creek Woodlands

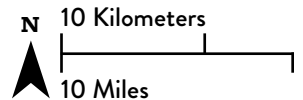
Gateway Communities:

Winter Springs, Oviedo

A Gateway Community is a designated town in close proximity to the Florida Trail that offers resources for hikers such as accommodations, restaurants, grocery stores or laundry. For the community, it provides publicity, tourism, and economic growth.



 Florida National Scenic Trail





District 8

The Honorable Bill Posey

The Florida Trail in District 8 highlights the uniquely effective partnership between **State, County** and **City** landowners currently under agreement with the USDA Forest Service to host the Florida National Scenic Trail.

The Florida Trail in District 8 is a Non-Partisan Public Resource that needs your support.

District 8 Constituency Engagement in 2020

Hours Donated in 2020: **2,746**

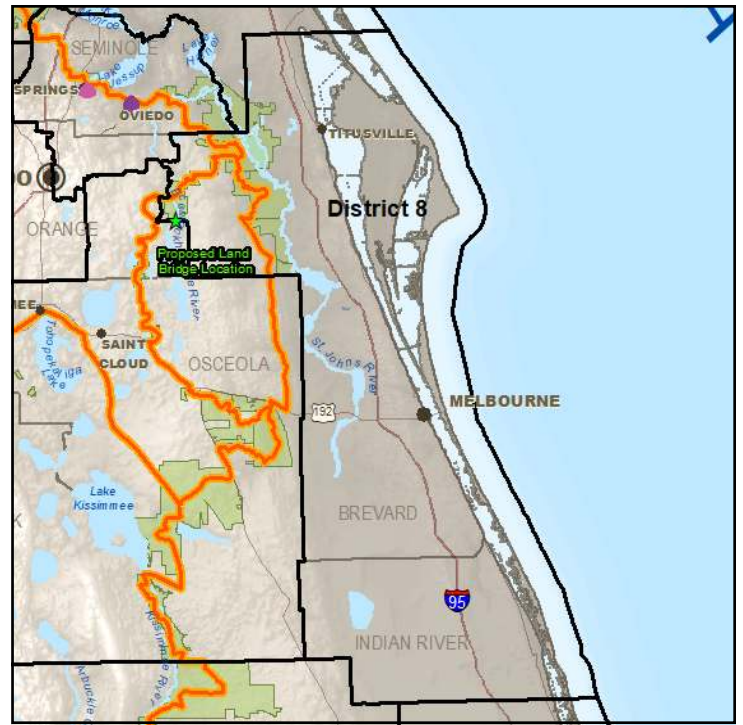
Dollar Value of Hours Donated in 2020: **\$74,691.20**

Residents of Your Congressional District Spend

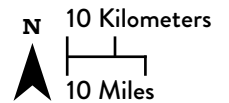
\$1.68 Billion on Outdoor Recreation Each Year

The Florida Trail in District 8 is hosted by:

- Florida Fish and Wildlife Commission – **State**
 - Seminole Ranch WMA
 - Tosohatchee WMA
- Saint John’s River Water Management District – **State**
 - Hal Scott Regional Preserve
- Orange County – **County**
 - Savage/Christmas Creek Preserve
 - Pine Lily Preserve
- Florida Forest Service – **State**
 - Bronson State Forest
- City of Orlando – **City**
 - Orlando Wetlands Park



Florida National Scenic Trail



Proposed Gateway Communities: Christmas

A Gateway Community is a designated town in close proximity to the Florida Trail that offers resources for hikers such as accommodations, restaurants, grocery stores or laundry. For the community, it provides publicity, tourism, and economic growth.



District 9

The Honorable Darren Soto

The Florida Trail in District 9 highlights the uniquely effective partnership between **State, County** and **Private** landowners currently under agreement with the USDA Forest Service to host the Florida National Scenic Trail.

The Florida Trail in District 9 is a Non-Partisan Public Resource that needs your support.

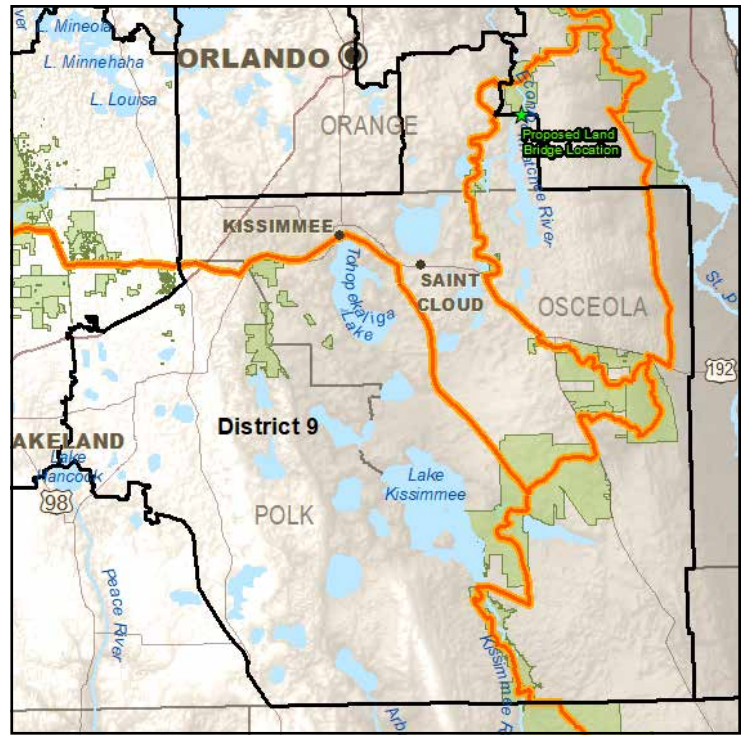
District 9 Constituency Engagement in 2020

Hours Donated in 2020: **1,655**

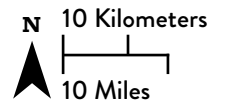
Dollar Value of Hours Donated in 2020: **\$45,016**

Residents of Your Congressional District Spend

\$1.48 Billion on Outdoor Recreation Each Year



 Florida National Scenic Trail



Florida Fish and Wildlife Conservation Commission – **State**

- Herky Huffman/Bull Creek WMA
- KICCO WMA
- Triple N Ranch WMA
- Three Lakes WMA

Alan Broussard Conservancy – **Private**

- Forever Florida

Florida Department of Environmental Protection – **State**

- Kissimmee Prairie Preserve SP

Osceola County- **County**

- Lake Lizzie Preserve

Orange County- **County**

- Split Oak Forest
- Moss Park
- Crosby Island Marsh

Proposed Gateway Communities:

Kissimmee, St. Cloud

A Gateway Community is a designated town in close proximity to the Florida Trail that offers resources for hikers such as accommodations, restaurants, grocery stores or laundry. For the community, it provides publicity, tourism, and economic growth.





District 11

The Honorable Daniel Webster

The Florida Trail in District 11 highlights the uniquely effective partnership between **State** landowners currently under agreement with the USDA Forest Service to host the Florida National Scenic Trail.

The Florida Trail in District 11 is a Non-Partisan Public Resource that needs your support.

District 11 Constituency Engagement in 2020

Hours Donated in 2020: **915**

Dollar Value of Hours Donated in 2020: **\$24,895.86**

Residents of Your Congressional District Spend **\$1.67** Billion on Outdoor Recreation Each Year

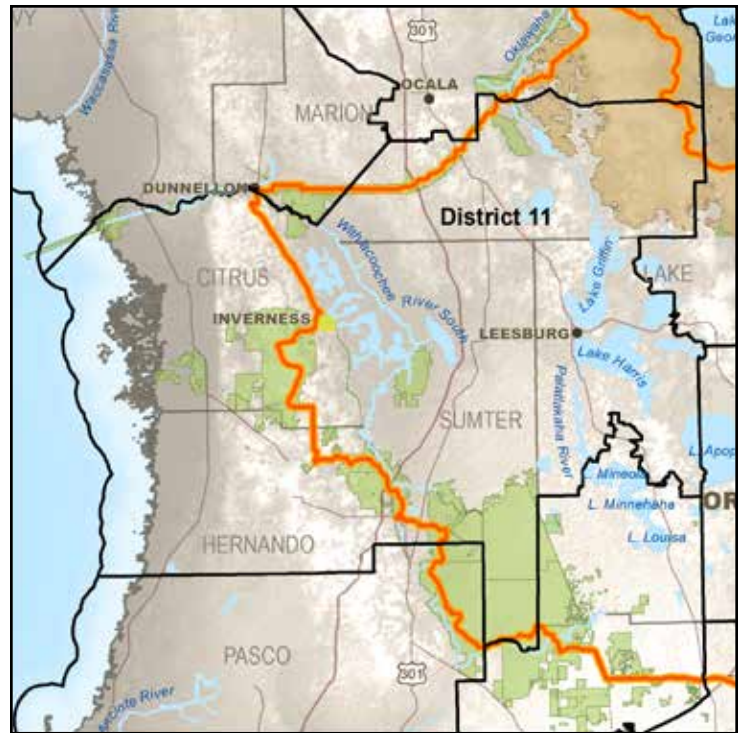
The Florida Trail in District 11 is hosted by:

Florida Forest Service – **State**
Withlacoochee State Forest

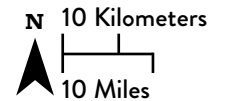
Gateway Communities:
Inverness

Proposed Gateway Communities:
Dunnellon

A Gateway Community is a designated town in close proximity to the Florida Trail that offers resources for hikers such as accommodations, restaurants, grocery stores or laundry. For the community, it provides publicity, tourism, and economic growth.



 Florida National Scenic Trail



*Croom River Trail, Withlacoochee State Forest
Photo by Barbara Bowen*



District 12

The Honorable Gus Bilirakis

The Florida Trail in District 12 highlights the uniquely effective partnership between **State** landowners currently under agreement with the USDA Forest Service to host the Florida National Scenic Trail.

The Florida Trail in District 12 is a Non-Partisan Public Resource that needs your support.

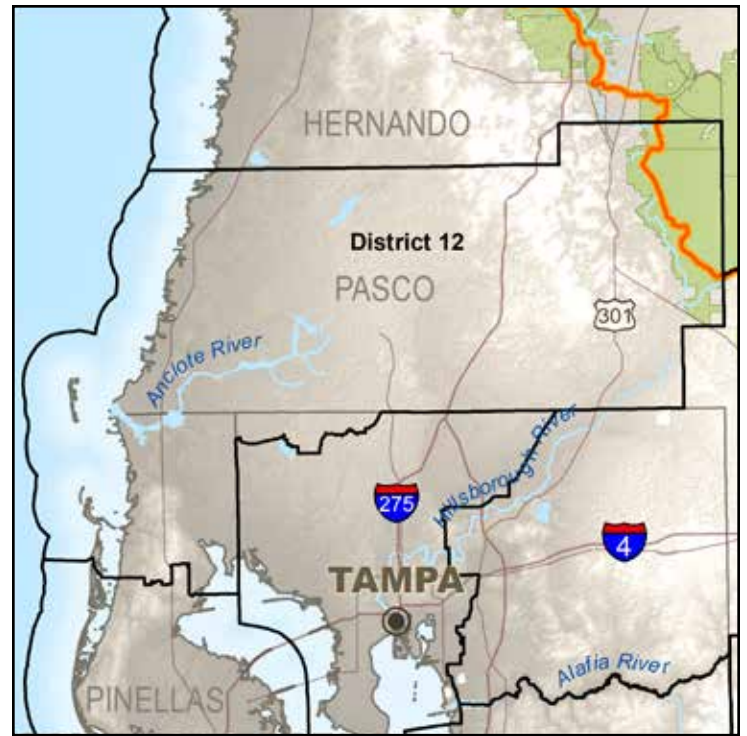
District 12 Constituency Engagement in 2020

Hours Donated in 2020: **1,459**

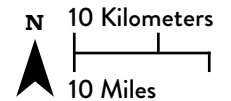
Dollar Value of Hours Donated in 2020: **\$39,684.80**

Residents of Your Congressional District Spend

\$1.73 Billion on Outdoor Recreation Each Year



 Florida National Scenic Trail



The Florida Trail in District 12 is hosted by:

Southwest Florida Water Management District – **State**
Green Swamp WMA





District 17

The Honorable Greg Steube

The Florida Trail in District 17 highlights the uniquely effective partnership between **Federal** and **State** landowners currently under agreement with the USDA Forest Service to host the Florida National Scenic Trail.

The Florida Trail in District 17 is a Non-Partisan Public Resource that needs your support.

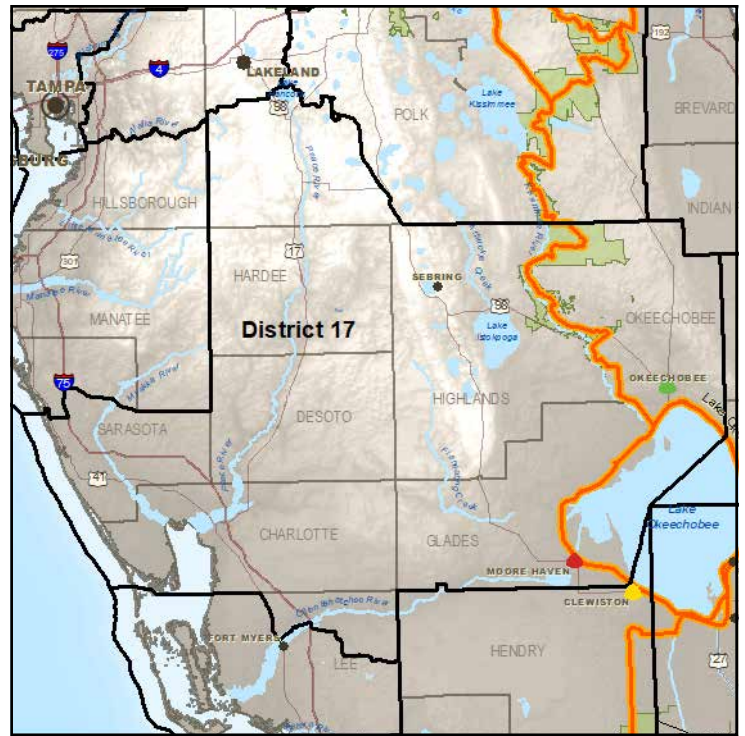
District 17 Constituency Engagement in 2020

Hours Donated in 2020: **1,934**

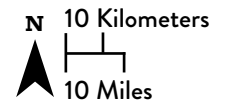
Dollar Value of Hours Donated in 2020: **\$52,604.80**

Residents of Your Congressional District Spend

\$1.66 Billion on Outdoor Recreation Each Year



 Florida National Scenic Trail



The Florida Trail in District 17 is hosted by:

- Florida Department of Environmental Protection – **State**
 - Kissimmee Prairie Preserve SP
- South Florida Water Management District – **State**
 - Kissimmee River WMA
 - Starvation Slough WMA
 - Yates Marsh WMA
 - Chandler Slough WMA
- US Army Corps of Engineers – **Federal**
 - Okeechobee North
 - Lake Okeechobee Scenic Trail



Gateway Communities:

Okeechobee, Moore Haven

Proposed Gateway Communities:

Lakeport

A Gateway Community is a designated town in close proximity to the Florida Trail that offers resources for hikers such as accommodations, restaurants, grocery stores or laundry. For the community, it provides publicity, tourism, and economic growth.



District 18

The Honorable Brian Mast

The Florida Trail and Ocean to Lake Trail in District 18 highlight the uniquely effective partnership between **Federal, State** and **County** landowners currently under agreement with the USDA Forest Service and the Florida Trail Association to host the Florida National Scenic Trail and the Ocean to Lake Trail.

The Florida Trail and the Ocean to Lake Trail in District 18 are Non-Partisan Public Resources that needs your support.

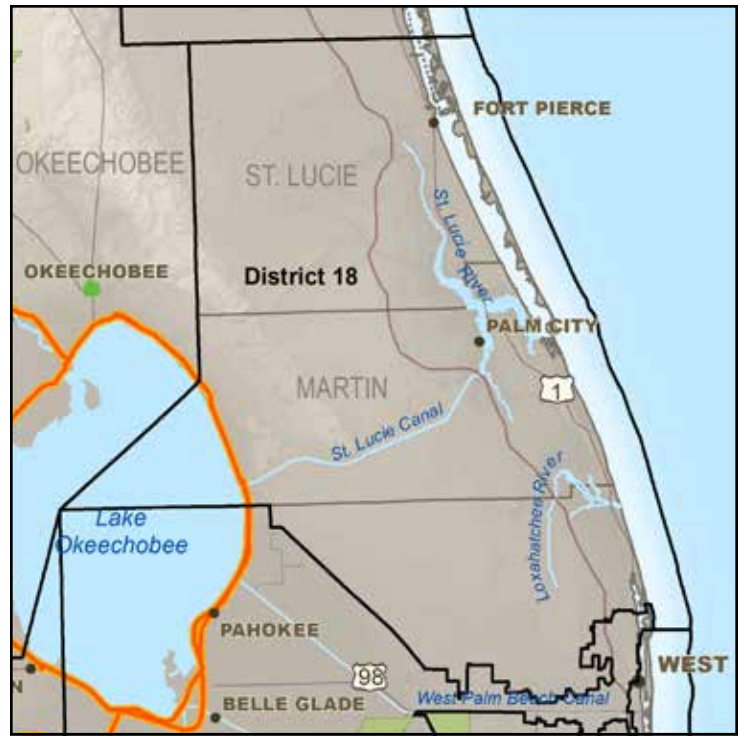
District 18 Constituency Engagement in 2020

Hours Donated in 2020: **54**

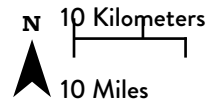
Dollar Value of Hours Donated in 2020: **\$1,468.80**

Residents of Your Congressional District Spend

\$1.72 Billion on Outdoor Recreation Each Year



 Florida National Scenic Trail



The Florida Trail and Ocean to Lake Trail in District 18 is hosted by:

- US Army Corps of Engineers – **Federal**
 - Lake Okeechobee Scenic Trail
- South Florida Water Management District – **State**
 - Dupuis Reserve WMA
 - Cypress Creek and Loxahatchee River MA
- Martin County – **County**
 - South Fork Addition
- Palm Beach County – **County**
 - Hungryland Slough Natural Area
 - Loxahatchee Slough Natural Area
 - River Bend Park
- Florida Department of Environmental Protection – **State**
 - Seabranck Preserve SP
 - Jonathan Dickinson SP
- Florida Fish and Wildlife Conservation Commission – **State**
 - J. W. Corbett WMA





District 25

The Honorable Mario Diaz-Balart

The Florida Trail in District 25 highlight the uniquely effective partnership between **Federal, State** and **Private** landowners currently under agreement with the USDA Forest Service to host the Florida National Scenic Trail.

The Florida Trail in District 25 is a Non-Partisan Public Resource that needs your support.

District 25 Constituency Engagement in 2020

Hours Donated in 2020: **979**

Dollar Value of Hours Donated in 2020: **\$26,628.80**

Residents of Your Congressional District Spend **\$1.23** Billion on Outdoor Recreation Each Year

The Florida Trail in District 25 is hosted by:

- US Army Corps of Engineers – **Federal**
 - Lake Okeechobee Scenic Trail
- South Florida Water Management District – **State**
 - L1E Canal Levee
 - L2 Canal Levee
- Seminole Tribe of Florida – **Private**
 - Big Cypress Reservation
- USDI National Park Service – **Federal**
 - Big Cypress National Preserve

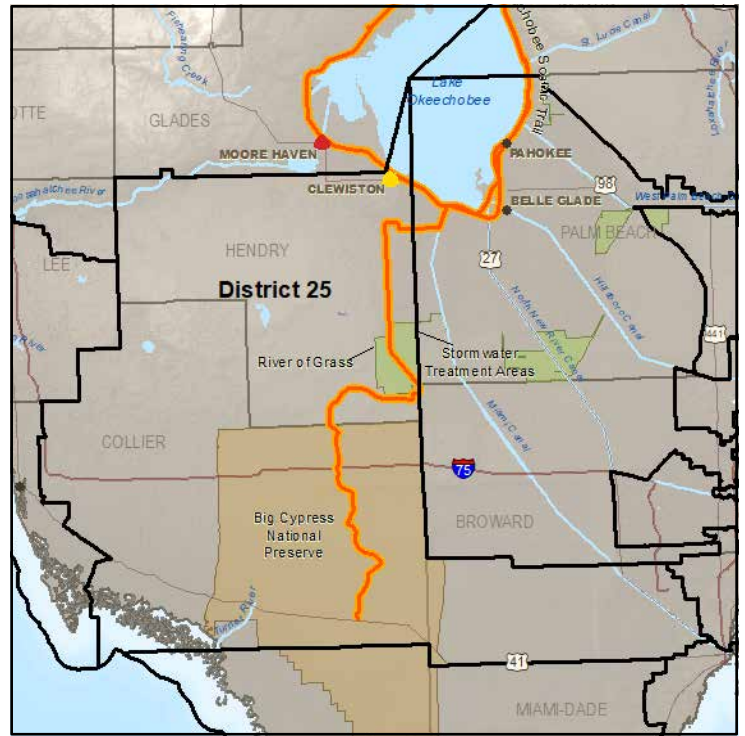
Proposed Gateway Communities:

Ochopee

A Gateway Community is a designated town in close proximity to the Florida Trail that offers resources for hikers such as accommodations, restaurants, grocery stores or laundry. For the community, it provides publicity, tourism, and economic growth.



The Ochopee Post Office is the smallest post office building in the United States.



Florida National Scenic Trail

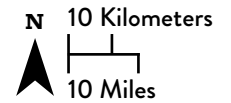


Photo courtesy of olekinderhook on Wikipedia.com



©2021 FLORIDA TRAIL ASSOCIATION