

Notice to Hikers

1.5.22

Map 14

Permanent Change: No

Holton Creek Tract Closed Weekdays

Starting January 5, 2022 the Holton Creek Tract is closed weekdays for a timber restoration harvest project until further notice. A 1.25 mile of the Florida National Scenic Trail is closed from the hunter check station to road 20-3 and a reroute is marked using public road 20-1. This closure does not affect the Holton Creek River Camp. Weekend users are encouraged to be safe while recreating.

Suwannee River Water Management District is responsible for restoring natural communities and has developed management that will lead toward the successful restoration of sandhills on its lands.

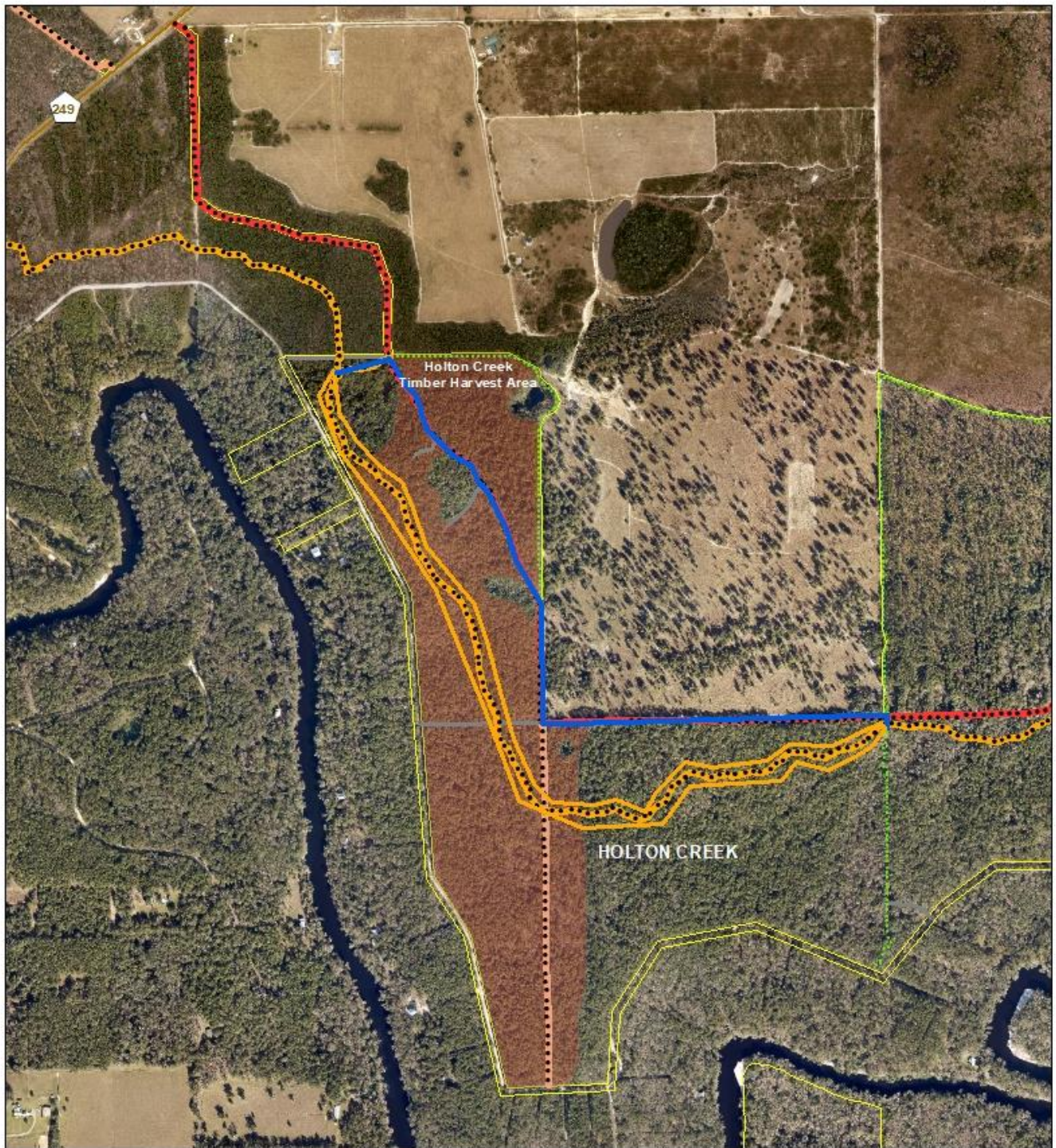
Depending on the condition of these communities, management procedures may include the removal of hardwoods that would not be present in a fire-dominated plant community and the long-term use of prescribed fire to encourage the establishment and growth of native grass and herbaceous plant species.

Long-term management practices, such as prescribed burning, will benefit not only the continued survival of the plant and animal species that inhabit this community, but will also provide continued recreational and aesthetic enjoyment for future generations.

Sandhills are open, fire-dominated plant communities situated on well-drained soils. Groundcover plants such as wiregrass, bluestem, and other herbaceous species form the foundation of this community. Dominant tree species often include scattered longleaf pine and small clumps of fire-tolerant oak species such as turkey oak, bluejack oak, sand post oak and southern red oak.

Sandhills are important to various wildlife species including rare animals such as gopher tortoises, indigo snakes, and red-cockaded woodpeckers. This community also provides important foraging and nesting habitat for common game species such as the bobwhite quail, wild turkey, and white-tailed deer.

For status information on District lands contact Suwannee River Water Management District 386-362-1001 or email recreation@srwmd.org.



Legend

● Florida National Scenic Trail (FNST)

□ FNST Closed Section

— FNST Reroute

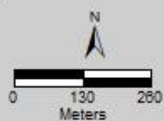
District Roads

— Administrative

— Secondary

— Public

■ Timber Harvest Area



Holton Creek Tract Timber Harvest Florida National Scenic Trail



Note: This map was created by the Suwannee River Water Management District (SRWMD) to be used for planning purposes only. SRWMD shall not be held liable for any injury or damage caused by the use of data distributed as a public records request regardless of their use or application. SRWMD does not guarantee the accuracy, or suitability for any use of these data, and no warranty is expressed or implied. For more information please contact the SRWMD at 386-362-1001.
Map Created on 1/4/2022

