



National Park Service  
U.S. Department of the Interior

Big Cypress National Preserve  
33100 Tamiami Trail E.  
Ochopee, FL 34141

561-923-5228 phone  
[www.nps.gov](http://www.nps.gov)

---

## Big Cypress National Preserve News Release

**Release Date: Immediate**

**Contact:** Sandy Wildfire Information Officer: Riki Hoopes, [erika\\_hoopes@nps.gov](mailto:erika_hoopes@nps.gov), 786-886-9342

### Big Cypress National Preserve Issues Temporary Area Closure for the Sandy Wildfire

OCHOPEE, FL – Yesterday, May 1st, at approximately 3:30 PM, a wildfire was discovered in Big Cypress National Preserve, located just west of the Blue Loop portion of Florida Trail. The Sandy Wildfire is currently estimated to be about 50 acres, burning in a mixture of grass, brush and pine. South Florida Fire & Aviation resources are on scene, and additional resources have been ordered.

Big Cypress National Preserve has issued a temporary trail closure to promote visitor safety during current wildfire activity effective immediately, May 2, 2023. During the closure all recreational use including off-road vehicles, hiking, camping, hunting and commercial activities are prohibited in the designated areas.

Please refer to the provided map and area description below, temporary closures include the following areas:

#### Closures Include All Trails and Roadways

- **West of 11 Mile Road**
- **North of US41**
- **East of Monument Trail**
- **South of Mud Lake, Little Deer, Oasis Trail, and Lost Dog**

#### Trail Closure

- **Florida Trail from Oasis Visitor Center to I75 (MM63) including all campsites**

The following adjacent areas will remain open:

- Private lands in the designated area; residents should use caution and notify the Fire Duty Officer of entry by calling 561-923-5228.

---

EXPERIENCE YOUR AMERICA™

The National Park Service cares for special places saved by the American people so that all may experience our heritage.

The public will be advised of the termination of this closure by web alert, and by the posting of signs in the appropriate areas. For additional updates and closures, please visit [nps.gov/bicy](http://nps.gov/bicy) for park alerts or fire updates.

[www.nps.gov](http://www.nps.gov)

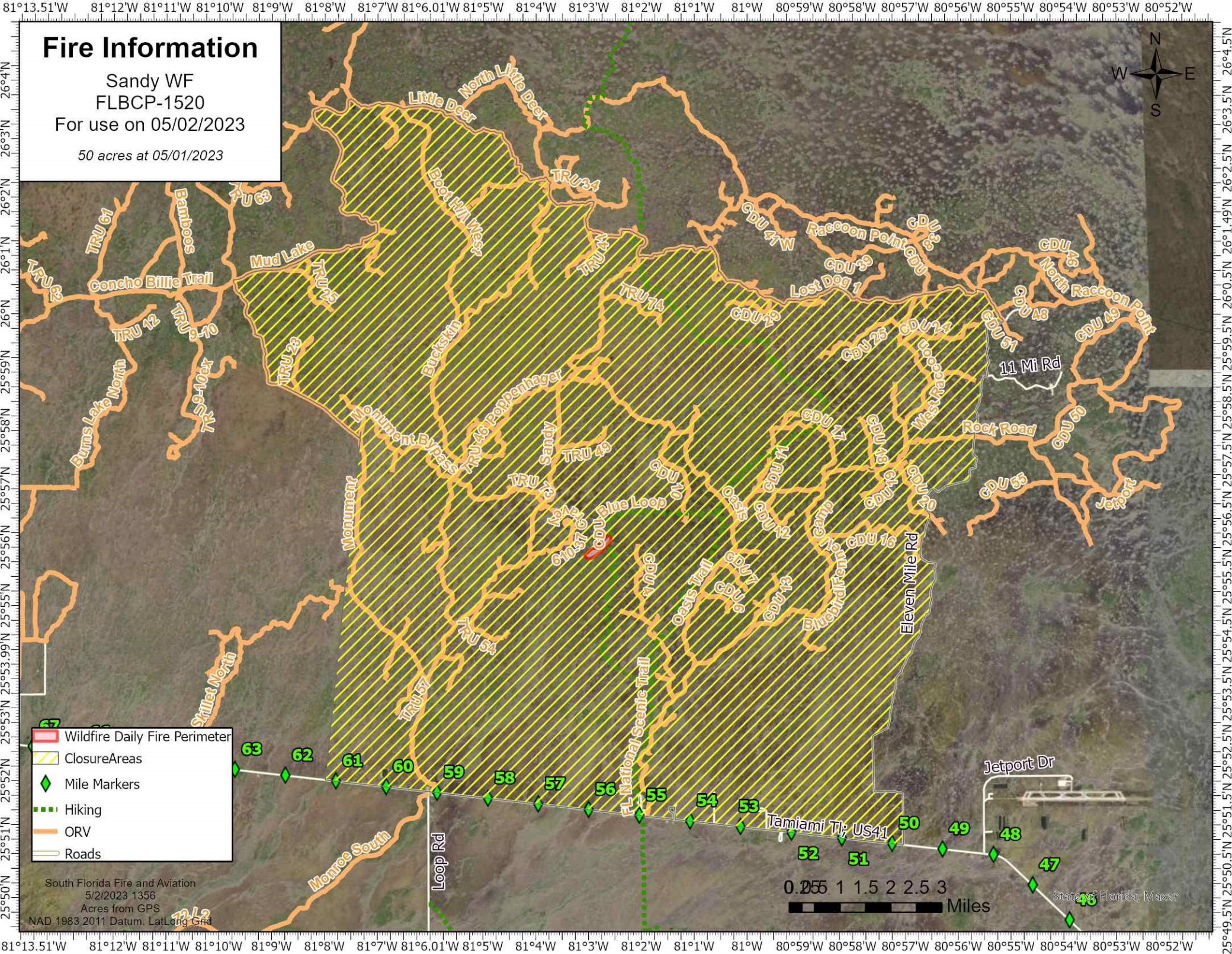
*About the National Park Service. More than 20,000 National Park Service employees care for America's 421 national parks and work with communities across the nation to help preserve local history and create close-to-home recreational opportunities. Learn more at [www.nps.gov](http://www.nps.gov), and on [Facebook](#), [Instagram](#), [Twitter](#), and [YouTube](#).*

# Fire Information

Sandy WF  
FLBCP-1520

For use on 05/02/2023

50 acres at 05/01/2023



- Wildfire Daily Fire Perimeter
- Closure Areas
- Mile Markers
- Hiking
- ORV
- Roads

South Florida Fire and Aviation  
5/2/2023 1356  
Acres from GPS  
NAD 1983 2011 Datum, Lat/Long Grid

0 0.5 1 1.5 2 2.5 3 Miles

State of Florida, Maxar