

Congressional Report



2025 119th Congress



Connect With Us

Florida Trail Association

Building More Than Trails



1022 NW 2nd St

Gainesville, FL 32601

web: floridatrail.org

email: FTA@floridatrail.org

phone: 352-378-8823



The Florida Trail is Open To All

The Florida Trail is a 1,500-mile footpath that extends from Big Cypress National Preserve in south Florida to Gulf Islands National Seashore in the Florida panhandle.

Hike our white sand beaches. Travel through dense subtropical forests and vast, open grasslands. Test your physical and mental endurance in Florida's swamps, marshes, and wetlands. Encounter the diverse plant and animal life that flourish along the Florida Trail.

The Florida Trail is public resource that needs your support!

Our 2024 Trail Season Summary

Total Volunteer Hours Donated: **24,351**

Dollar Value of Hours Donated: **\$815,515**

Total Miles Traveled by FTA Volunteers: **175,064**

Miles of Trail Maintained: **1,122**

New Miles of Trail Built: **10**

Linear Feet of New Infrastructure Construction: **196**

Linear Feet of Infrastructure Maintained: **11,044**

Total Number of Land Managers that Host Sections of the Florida Trail: **68**



District 1

House Seat Currently Vacant

The Florida Trail in District 1 highlights the uniquely effective partnership between **Federal**, **State**, and **County** landowners currently under agreement with the USDA Forest Service to host the Florida National Scenic Trail.

The 159 mile segment of the Florida Trail in District 1 is a public resource that needs your support.

District 1 Constituency Engagement in 2024

Hours Donated in 2024: **2,679**

Miles Driven in 2024: **19,257**

Dollar Value of Volunteer Contributions: **\$92,403**

Florida's outdoor recreation economy generates \$57.8 Billion in added value, and accounts for 3.6% of state GDP.

The Florida Trail in District 1 is hosted by:

Gulf Islands National Seashore – **Federal**

Santa Rosa Island Authority – **County**

Eglin Air Force Base – **Federal**

North West Florida Water Management District – **State**

Yellow River WMA

Lafayette Creek WMA

Choctawhatchee River WMA

Florida Forest Service – **State**

Blackwater River SF



Gateway Communities:

Pensacola Beach, Crestview

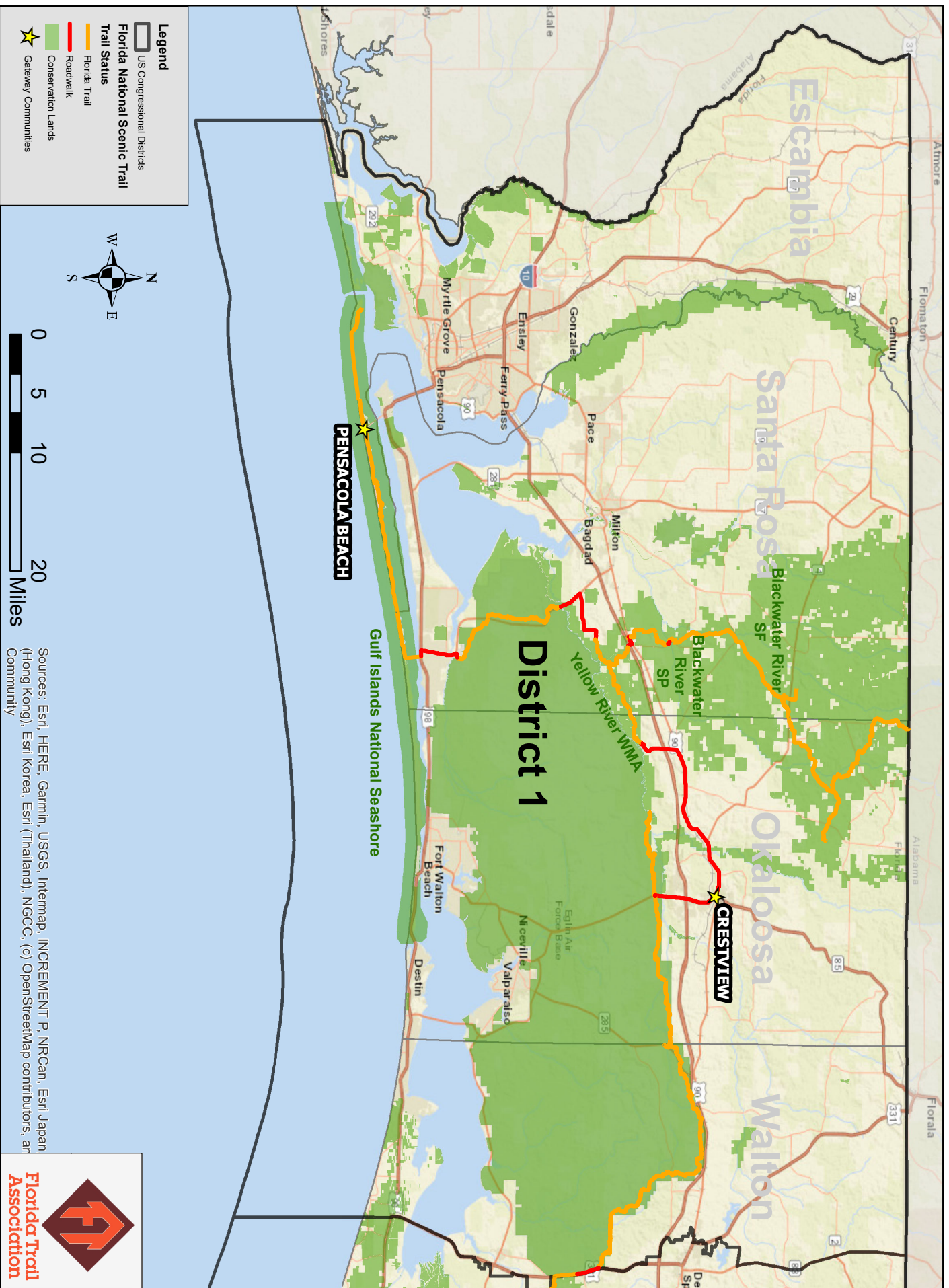
Proposed Gateway Communities:

Navarre, Holt, Defuniak Springs, Freeport

A Gateway Community is a designated town in close proximity to the Florida Trail that offers resources for hikers such as accommodations, restaurants, grocery stores or laundry. For the community, it provides publicity, tourism, and economic growth.



Florida Trail - US House of Representatives (District 1)



Sources: Esri, HERE, Garmin, USGS, Intermap, INCREMENT P, NRCan, Esri Japan (Hong Kong), Esri Korea, Esri (Thailand), NGCC, (c) OpenStreetMap contributors, ar





District 2

The Honorable Dr. Neal Dunn

The Florida Trail in District 2 highlights the uniquely effective partnership between **Federal, State, and Private** landowners currently under agreement with the USDA Forest Service to host the Florida National Scenic Trail.

The 197 mile segment of the Florida Trail in District 2 is a public resource that needs your support.

District 2 Constituency Engagement in 2024

Hours Donated in 2024: **2,192**

Miles Driven in 2024: **15,756**

Dollar Value of Volunteer Contributions: **\$75,602**

Florida's outdoor recreation economy generates \$57.8 Billion in added value, and accounts for 3.6% of state GDP.

The Florida Trail in District 2 is hosted by:

MC Davis Conservation Easement – **Private**

Nokuse Plantation

North West Florida Water Management District – **State**

Choctawhatchee River WMA

Econfina Creek WMA

Suwannee River Water Management District – **State**

Middle Aucilla WMA

Suwannee Valley CA

Florida Forest Service – **State**

Pine Log SF

Twin River SF

USDA Forest Service – **Federal**

St. Joe Tract

Apalachicola National Forest

Rainbow Tract

Williams Tract

USDI Fish and Wildlife Service – **Federal**

St. Marks National Wildlife Refuge

Florida Fish and Wildlife Conservation Commission – **State**

Aucilla WMA



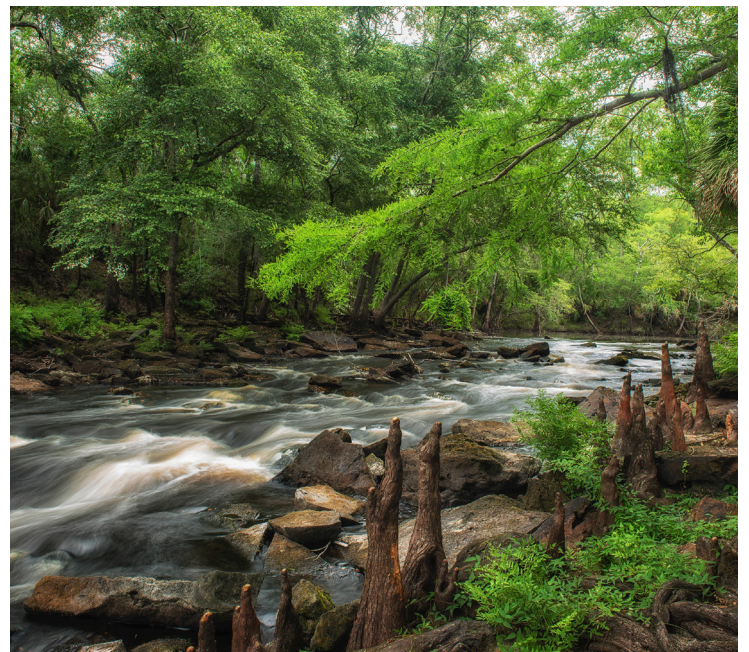
Gateway Communities:

Blountstown, Sopchoppy,
St. Marks

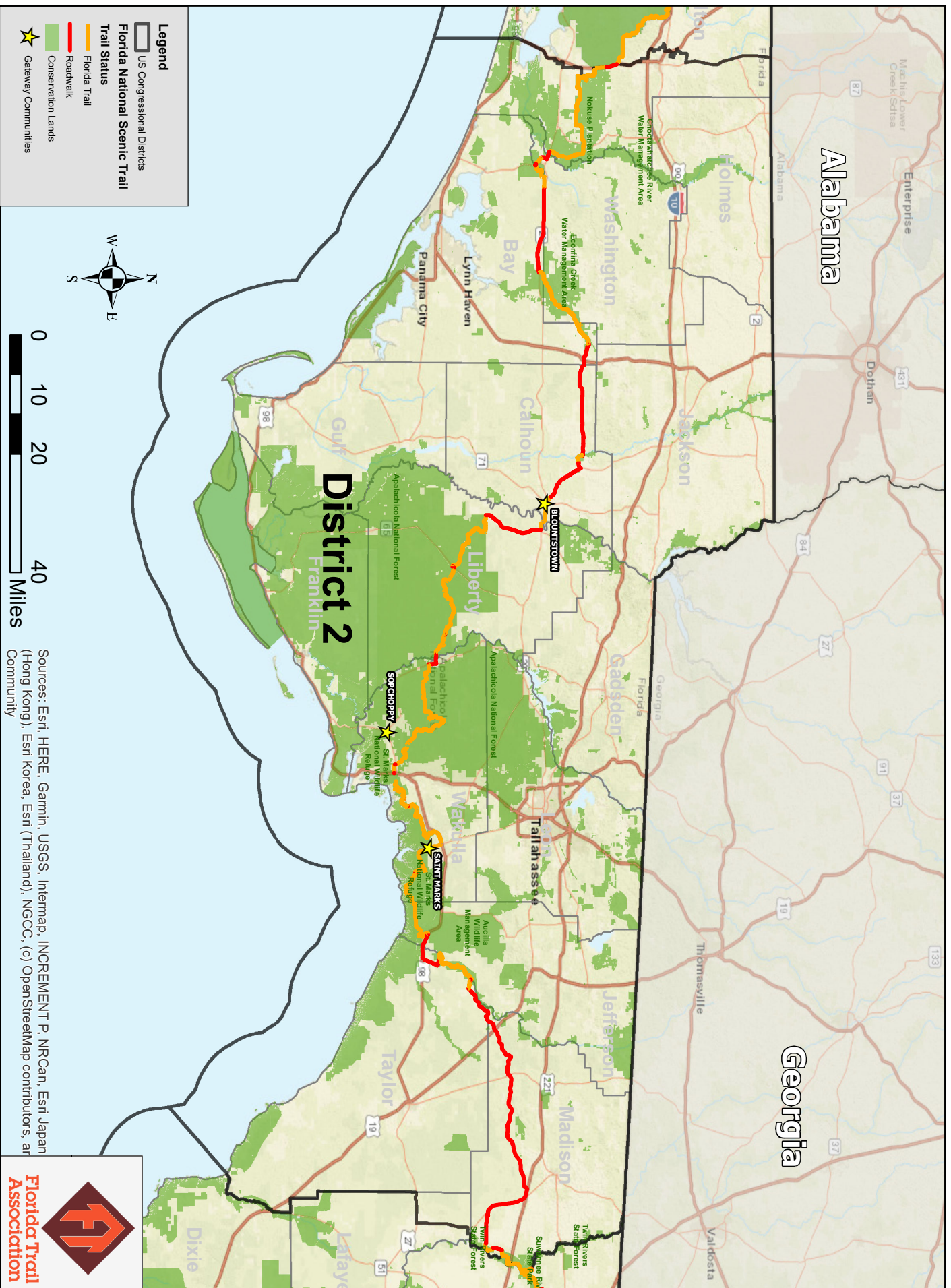
Proposed Gateway Communities:

Bruce, Hosford, Bristol, Crawfordville, Altha

A Gateway Community is a designated town in close proximity to the Florida Trail that offers resources for hikers such as accommodations, restaurants, grocery stores or laundry. For the community, it provides publicity, tourism, and economic growth.



Florida Trail - US House of Representatives (District 2)





District 3

The Honorable Kat Cammack

The Florida Trail in District 3 highlights the uniquely effective partnership between **Federal, State, Local** and **Private** landowners currently under agreement with the USDA Forest Service to host the Florida National Scenic Trail.

The 129 mile segment of the Florida Trail in District 3 is a public resource that needs your support.

District 3 Constituency Engagement in 2024

Hours Donated in 2024: **1,948**

Miles Driven in 2024: **14,005**

Dollar Value of Volunteer Contributions: **\$67,202**

Florida’s outdoor recreation economy generates \$57.8 Billion in added value, and accounts for 3.6% of state GDP.



The Florida Trail in District 3 is hosted by:

Florida Department of Environmental Protection – **State**

- Suwannee River State Park
- Stephen Foster Folk Culture Center SP
- Big Shoals State Park
- Olustee Battlefield Historic SP
- Palatka-Lake Butler Trail

USDA Forest Service – **Federal**

- Goolsby, Donaldson, Richards, Latus Tracts
- Suwannee River Farms MA
- Osceola NF

Suwannee River Water Management District – **State**

- Lower Alapaha, Holton Creek, Camp Branch CAs
- Swift Creek CA
- Deep Creek CA

Less-Than-Fee Access Easements – **Private**

Town of White Springs – **Township**

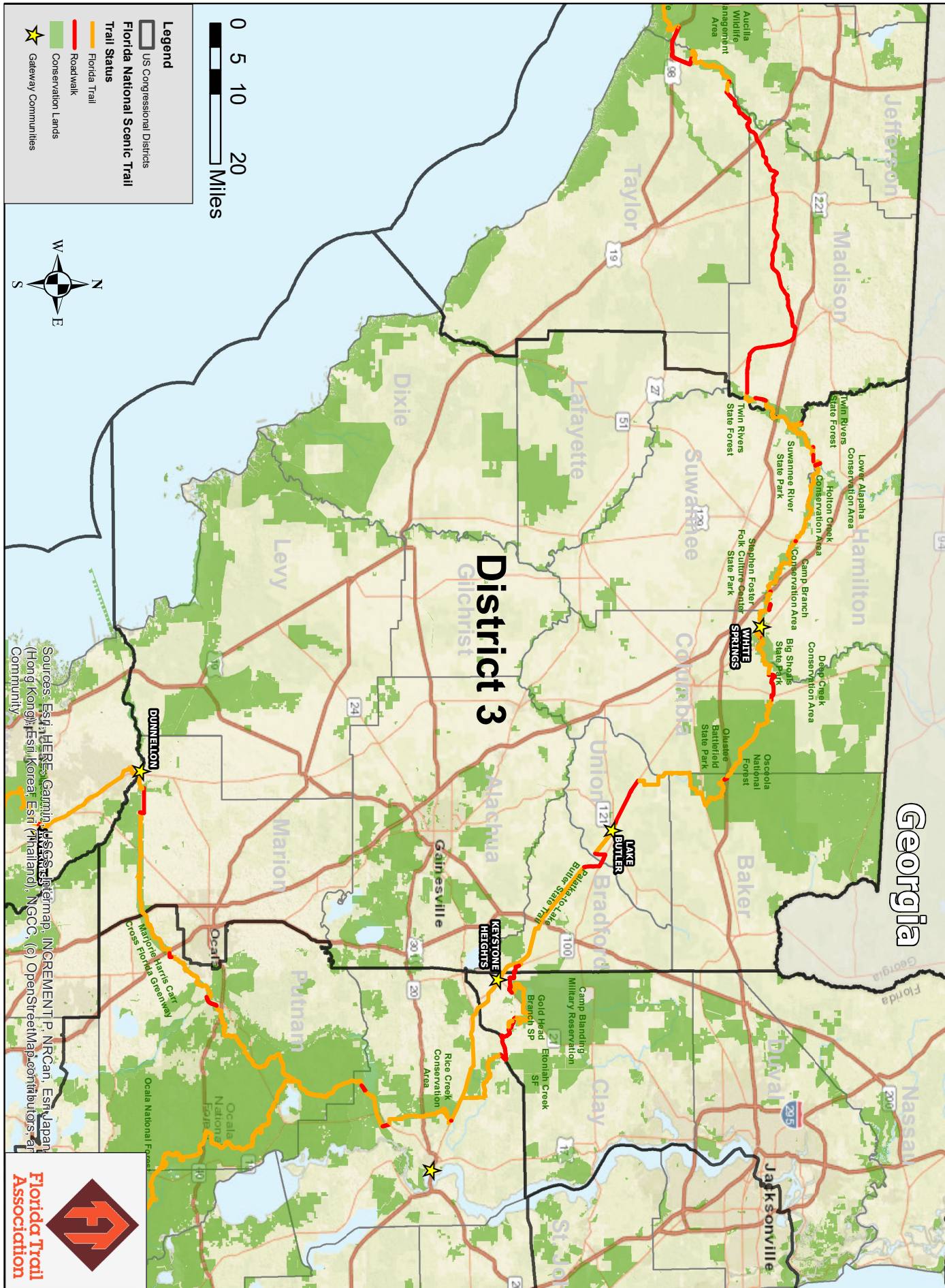
Gateway Communities:

White Springs, Lake Butler, Dunnellon

A Gateway Community is a designated town in close proximity to the Florida Trail that offers resources for hikers such as accommodations, restaurants, grocery stores or laundry. For the community, it provides publicity, tourism, and economic growth.



Florida Trail - US House of Representatives (District 3)





District 4

The Honorable Aaron Bean

The Florida Trail in District 4 highlights the uniquely effective partnership between **Federal**, **State**, and **Private** landowners currently under agreement with the USDA Forest Service to host the Florida National Scenic Trail.

The 21 mile segment of the Florida Trail in District 4 is a public resource that needs your support.

District 4 Constituency Engagement in 2024

Hours Donated in 2024: **244**

Miles Driven in 2024: **1,751**

Dollar Value of Volunteer Contributions: **\$8,400**

Florida's outdoor recreation economy generates \$57.8 Billion in added value, and accounts for 3.6% of state GDP.

The Florida Trail in District 4 is hosted by:

- US Department of Defense – **Federal**
Camp Blanding Military Reservation
- Florida Department of Environmental Protection – **State**
Mike Roess Gold Head Branch SP
- Weyerhaeuser Timber – **Private**

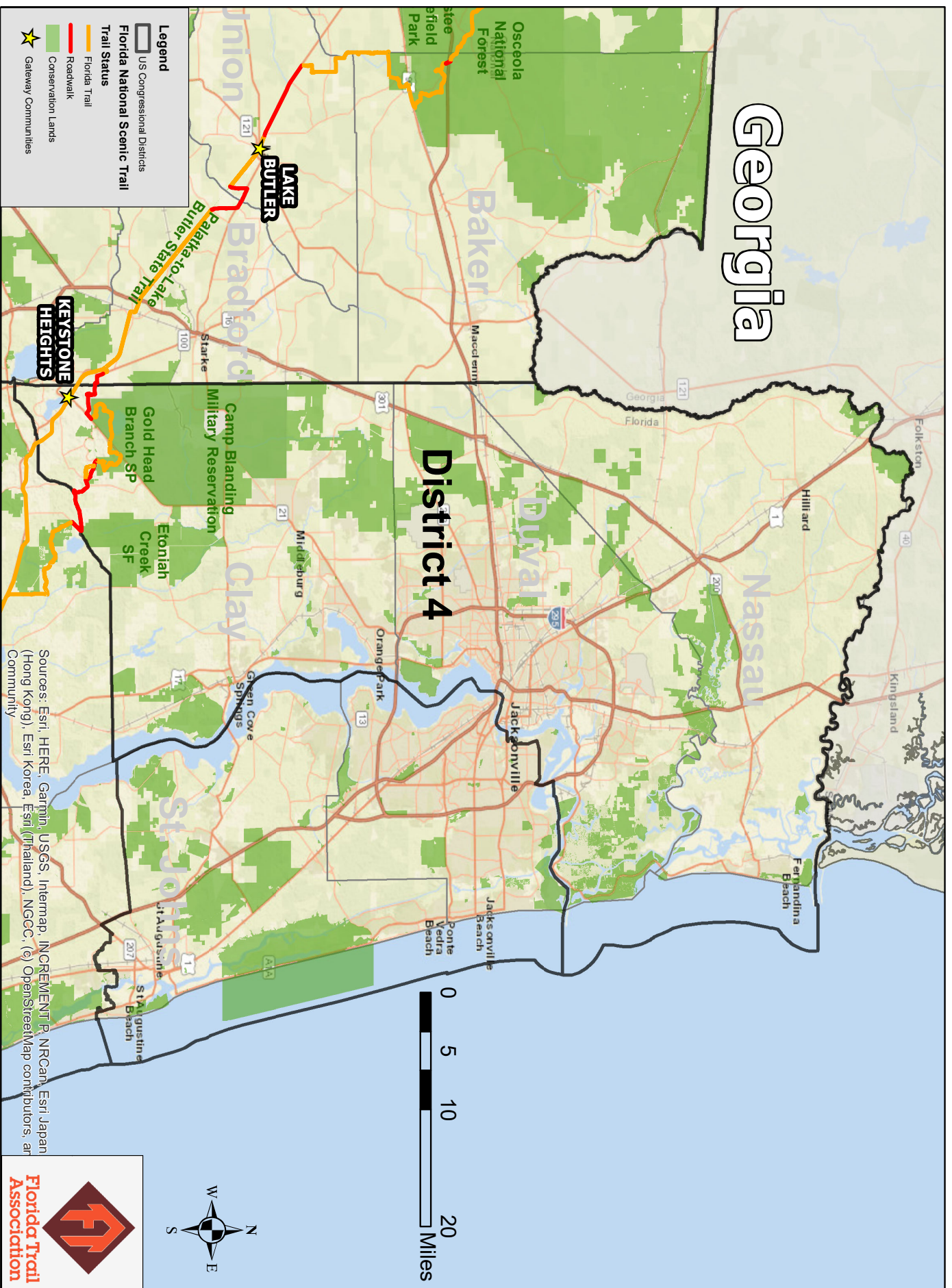
Gateway Communities:

Keystone Heights

A Gateway Community is a designated town in close proximity to the Florida Trail that offers resources for hikers such as accommodations, restaurants, grocery stores or laundry. For the community, it provides publicity, tourism, and economic growth.



Florida Trail - US House of Representatives (District 4)





District 6

House Seat Currently Vacant

The Florida Trail in District 6 highlights the uniquely effective partnership between **Federal**, **State**, and **Private** landowners currently under agreement with the USDA Forest Service to host the Florida National Scenic Trail.

The 171 mile segment of the Florida Trail in District 6 is a public resource that needs your support.

District 6 Constituency Engagement in 2024

Hours Donated in 2024: **6,818**

Miles Driven in 2024: **49,018**

Dollar Value of Volunteer Contributions: **\$235,207**

Florida's outdoor recreation economy generates \$57.8 Billion in added value, and accounts for 3.6% of state GDP.

The Florida Trail in District 6 is hosted by:

- Florida Forest Service – **State**
 - Seminole State Forest
 - Etoniah Creek State Forest
- USDA Forest Service – **Federal**
 - Ocala NF
- Florida Department of Environmental Protection – **State**
 - Marjorie Harris Carr Cross FL Greenway R & CA
- Orianne Center for Indigo Conservation – **Private**
- Saint John's River Water Management District – **State**
 - Rice Creek CA
- Boy Scouts of America – **Private**
 - Camp La No Che

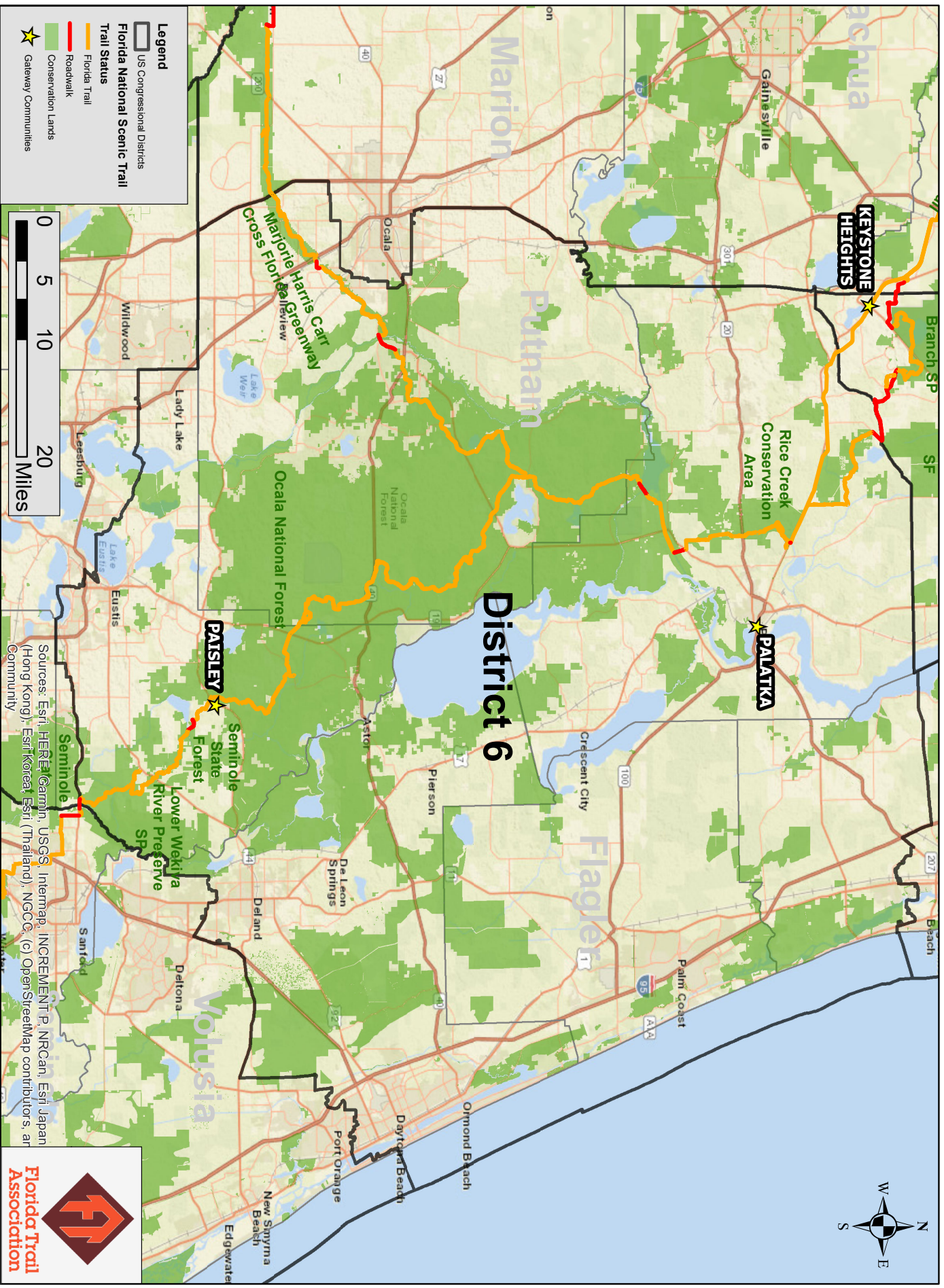


Proposed Gateway Communities: Paisley, Palatka

A Gateway Community is a designated town in close proximity to the Florida Trail that offers resources for hikers such as accommodations, restaurants, grocery stores or laundry. For the community, it provides publicity, tourism, and economic growth.

PAISLEY, FLORIDA-JULY 26, 2017: At Clearwater Lake Recreation Area in Ocala National Forest, a marker denotes the birth of the Florida Trail, designated the Florida National Scenic Trail in 1983.

Florida Trail - US House of Representatives (District 6)





District 7

The Honorable Cory Mills

The Florida Trail in District 7 highlights the uniquely effective partnership between **Federal, State, County** and **City** landowners currently under agreement with the USDA Forest Service to host the Florida National Scenic Trail.

The 38 mile segment of the Florida Trail in District 7 is a public resource that needs your support.

District 7 Constituency Engagement in 2024

Hours Donated in 2024: **1,218**

Miles Driven in 2024: **8,753**

Dollar Value of Volunteer Contributions: **\$42,001**

Florida's outdoor recreation economy generates \$57.8 Billion in added value, and accounts for 3.6% of state GDP.

The Florida Trail in District 7 is hosted by:

Seminole County – County

- Chuluota Wilderness
- Lucas Tract
- Wekiva Trail
- Cross Seminole Trail
- Spring Hammock Preserve
- Black Hammock Trail Head

Florida Department of Environmental Protection – State

- Lower Wekiva River Preserve SP

City of Oviedo – City

Florida Forest Service – State

- Little Big Econ State Forest

USDA Forest Service – Federal

- Mills Creek Woodlands

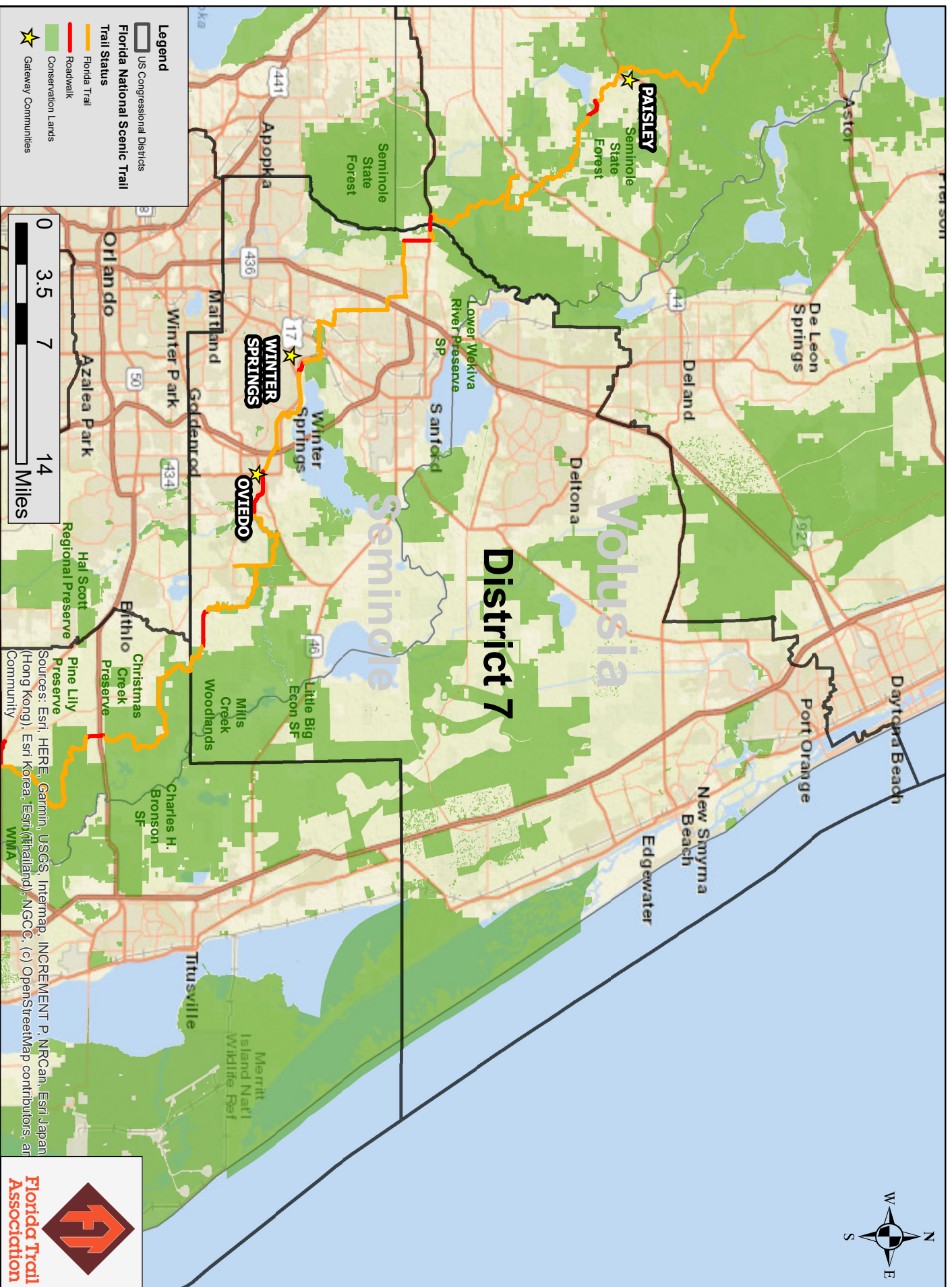
Gateway Communities:

- Winter Springs, Oviedo

A Gateway Community is a designated town in close proximity to the Florida Trail that offers resources for hikers such as accommodations, restaurants, grocery stores or laundry. For the community, it provides publicity, tourism, and economic growth.



Florida Trail - US House of Representatives (District 7)





District 8

The Honorable Mike Haridopolos

The Florida Trail in District 8 highlights the uniquely effective partnership between **State**, **County**, and **City** landowners currently under agreement with the USDA Forest Service to host the Florida National Scenic Trail.

The 27 mile segment of the Florida Trail in District 8 is a public resource that needs your support.

District 8 Constituency Engagement in 2024

Hours Donated in 2024: **2,435**

Miles Driven in 2024: **17,506**

Dollar Value of Volunteer Contributions: **\$84,002**

Florida's outdoor recreation economy generates \$57.8 Billion in added value, and accounts for 3.6% of state GDP.

The Florida Trail in District 8 is hosted by:

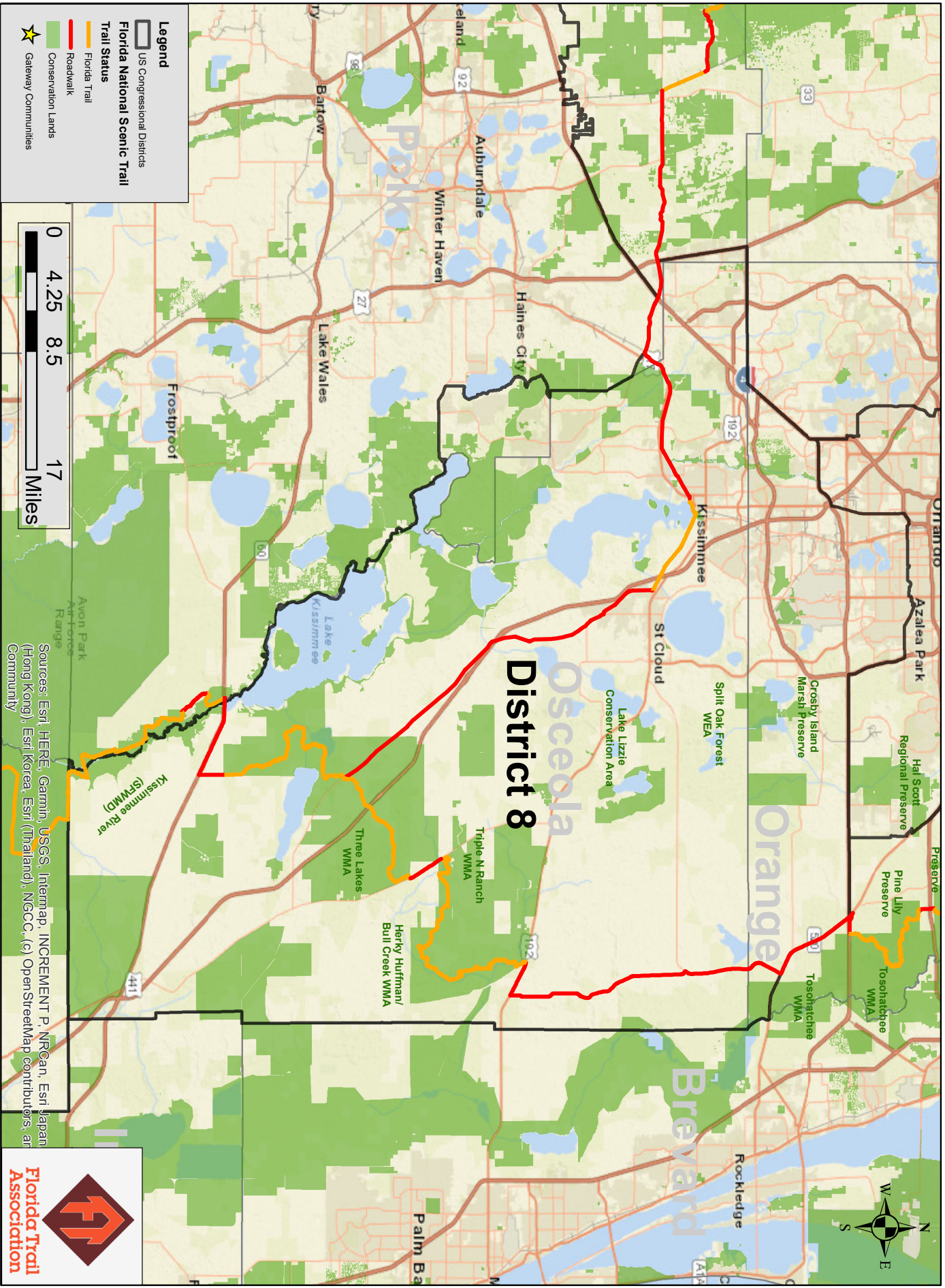
- Florida Fish and Wildlife Commission – **State**
 - Seminole Ranch WMA
 - Tosohatchee WMA
- Orange County – **County**
 - Savage/Christmas Creek Preserve
- Florida Forest Service – **State**
 - Bronson State Forest
- City of Orlando – **City**
 - Orlando Wetlands Park



Proposed Gateway Communities: Christmas

A Gateway Community is a designated town in close proximity to the Florida Trail that offers resources for hikers such as accommodations, restaurants, grocery stores or laundry. For the community, it provides publicity, tourism, and economic growth.

Florida Trail - US House of Representatives (District 8)



Legend

- US Congressional Districts
- Florida National Scenic Trail
- Trail Status
 - Florida Trail
 - Roadwalk
- Conservation Lands
- Gateway Communities



Sources: Esri, HERE, Garmin, USGS, Intermap, INCREMENT P, NRCan, Esri Japan (Hong Kong), Esri Korea, Esri (Thailand), NGCC, (c) OpenStreetMap contributors, and





District 9



The Honorable Darren Soto

The Florida Trail in District 9 highlights the uniquely effective partnership between **State**, **County** and **Private** landowners currently under agreement with the USDA Forest Service to host the Florida National Scenic Trail.

The 84 mile segment of the Florida Trail in District 9 is a public resource that needs your support.

District 9 Constituency Engagement in 2024

Hours Donated in 2024: **1,096**

Miles Driven in 2024: **7,878**

Dollar Value of Volunteer Contributions: **\$37,801**

Florida's outdoor recreation economy generates \$57.8 Billion in added value, and accounts for 3.6% of state GDP.

The Florida Trail in District 9 is hosted by:

- Florida Fish and Wildlife Conservation Commission – **State**
 - Herky Huffman/Bull Creek WMA
 - KICCO WMA
 - Triple N Ranch WMA
 - Three Lakes WMA
- Alan Broussard Conservancy – **Private**
 - Forever Florida
- Florida Department of Environmental Protection – **State**
 - Kissimmee Prairie Preserve SP
- Osceola County- **County**
 - Lake Lizzie Preserve
- Orange County- **County**
 - Split Oak Forest
 - Moss Park
 - Crosby Island Marsh

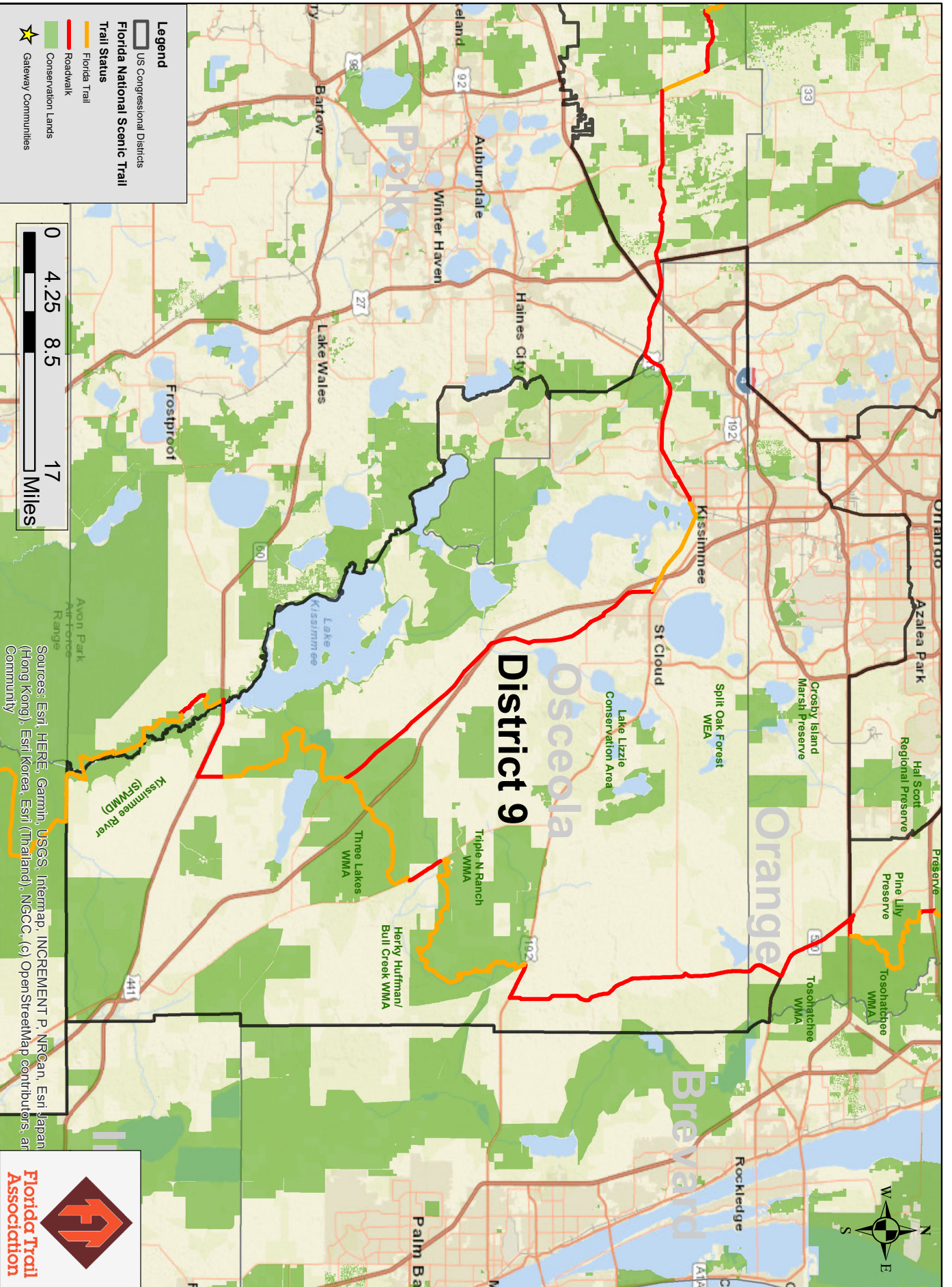
Proposed Gateway Communities:

Kissimmee, St. Cloud

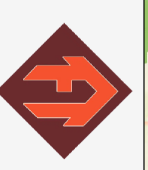
A Gateway Community is a designated town in close proximity to the Florida Trail that offers resources for hikers such as accommodations, restaurants, grocery stores or laundry. For the community, it provides publicity, tourism, and economic growth.



Florida Trail - US House of Representatives (District 9)



Sources: Esri, HERE, Garmin, USGS, Intermap, INCREMENT P, NRCan, Esri Japan (Hong Kong), Esri Korea, Esri (Thailand), NGCC, (c) OpenStreetMap contributors, and



Florida Trail Association



District 10

The Honorable Maxwell Alejandro Frost

The Florida Trail in District 10 highlights the uniquely effective partnership between **State** and **County** landowners currently under agreement with the USDA Forest Service to host the Florida National Scenic Trail.

The 2 mile segment of the Florida Trail in District 10 is a public resource that needs your support.

District 10 Constituency Engagement in 2024

Hours Donated in 2024: **49**

Miles Driven in 2024: **350**

Dollar Value of Volunteer Contributions: **\$1,680**

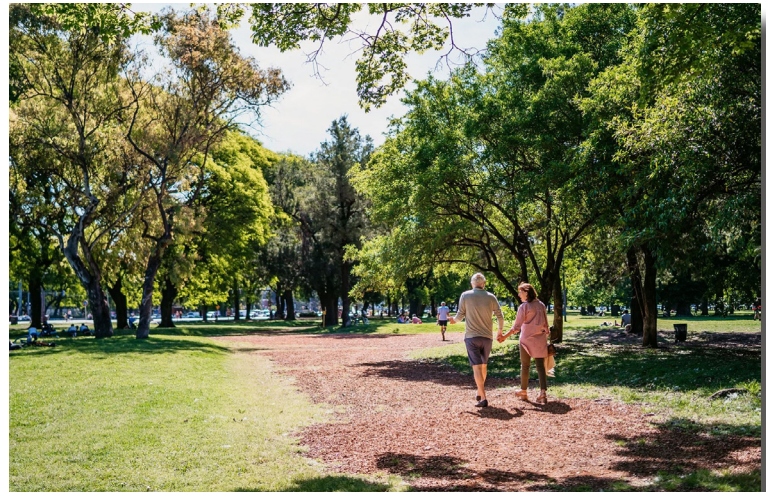
Florida’s outdoor recreation economy generates \$57.8 Billion in added value, and accounts for 3.6% of state GDP.

The Florida Trail in District 10 is hosted by:

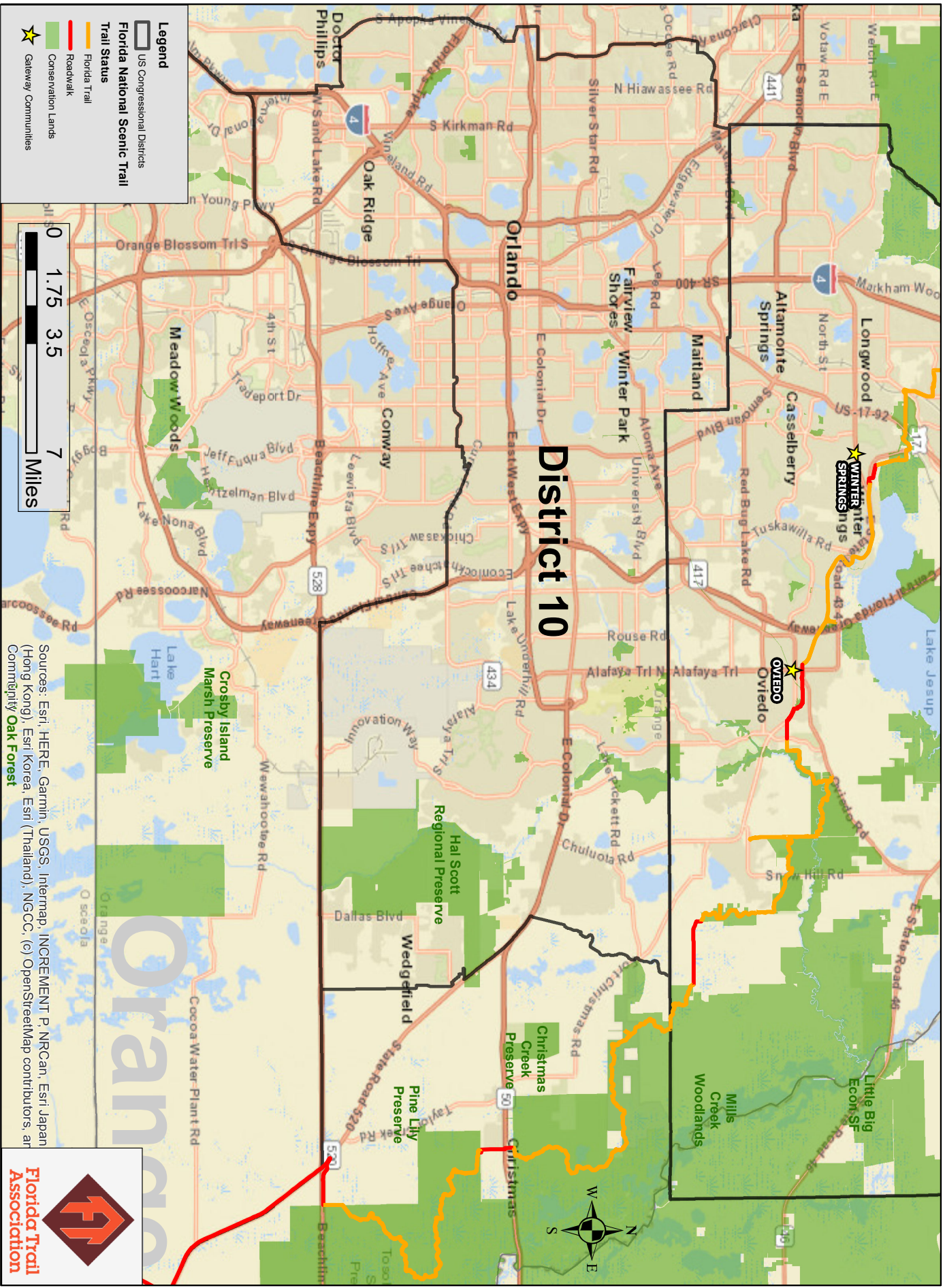
- Saint John’s River Water Management District – **State**
- Hal Scott Regional Preserve
- Orange County – **County**
- Pine Lily Preserve



St. Johns River Water Management District



Florida Trail - US House of Representatives (District 10)





District 11

The Honorable Daniel Webster

The Florida Trail in District 11 highlights the uniquely effective partnership between **State** landowners currently under agreement with the USDA Forest Service to host the Florida National Scenic Trail.

The 17 mile segment of the Florida Trail in District 11 is a public resource that needs your support.

District 11 Constituency Engagement in 2024

Hours Donated in 2024: **487**

Miles Driven in 2024: **3,501**

Dollar Value of Volunteer Contributions: **\$16,800**

Florida's outdoor recreation economy generates \$57.8 Billion in added value, and accounts for 3.6% of state GDP.

The Florida Trail in District 11 is hosted by:

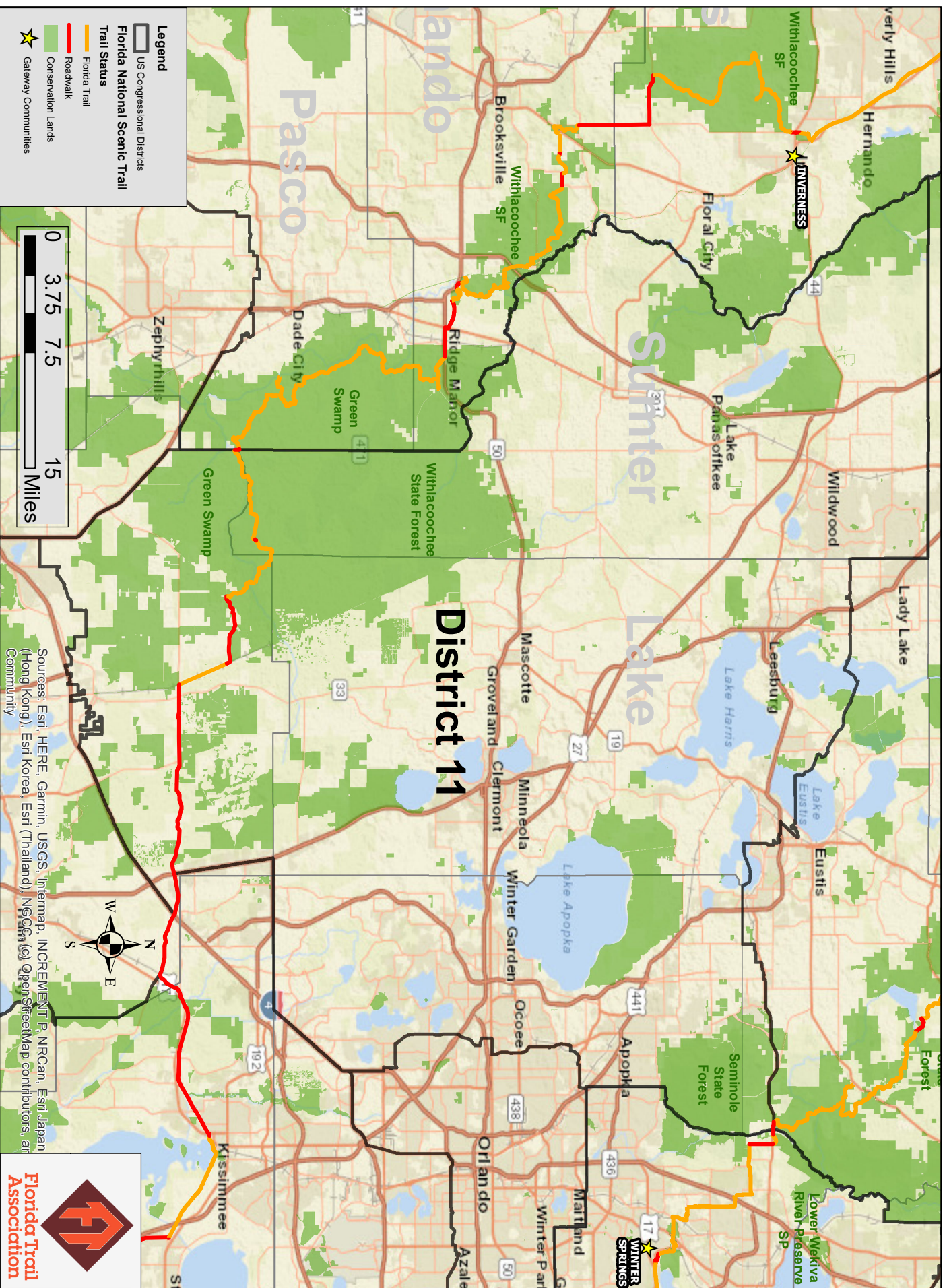
Florida Forest Service – **State**
Withlacoochee State Forest

Southwest Florida Water Management District – **State**
Green Swamp WMA



Croom River Trail, Withlacoochee State Forest
Photo by Barbara Bowen

Florida Trail - US House of Representatives (District 11)



Legend

- US Congressional Districts
- Florida National Scenic Trail
- Trail Status
 - Florida Trail
 - Roadwalk
 - Conservation Lands
- Gateway Communities



Sources: Esri, HERE, Garmin, USGS, Intermap, INCREMENT P, NRCan, Esri, Japan (Hong Kong), Esri Korea, Esri (Thailand), NGIS, OpenStreetMap contributors, and





District 12

The Honorable Gus Bilirakis

The Florida Trail in District 12 highlights the uniquely effective partnership between **State** landowners currently under agreement with the USDA Forest Service to host the Florida National Scenic Trail.

The 83 mile segment of the Florida Trail in District 12 is a public resource that needs your support.

District 12 Constituency Engagement in 2024

Hours Donated in 2024: **1,705**

Miles Driven in 2024: **12,254**

Dollar Value of Volunteer Contributions: **\$58,802**

Florida's outdoor recreation economy generates \$57.8 Billion in added value, and accounts for 3.6% of state GDP.

The Florida Trail in District 12 is hosted by:

Florida Forest Service – **State**

Withlacoochee State Forest

Southwest Florida Water Management District – **State**

Green Swamp WMA

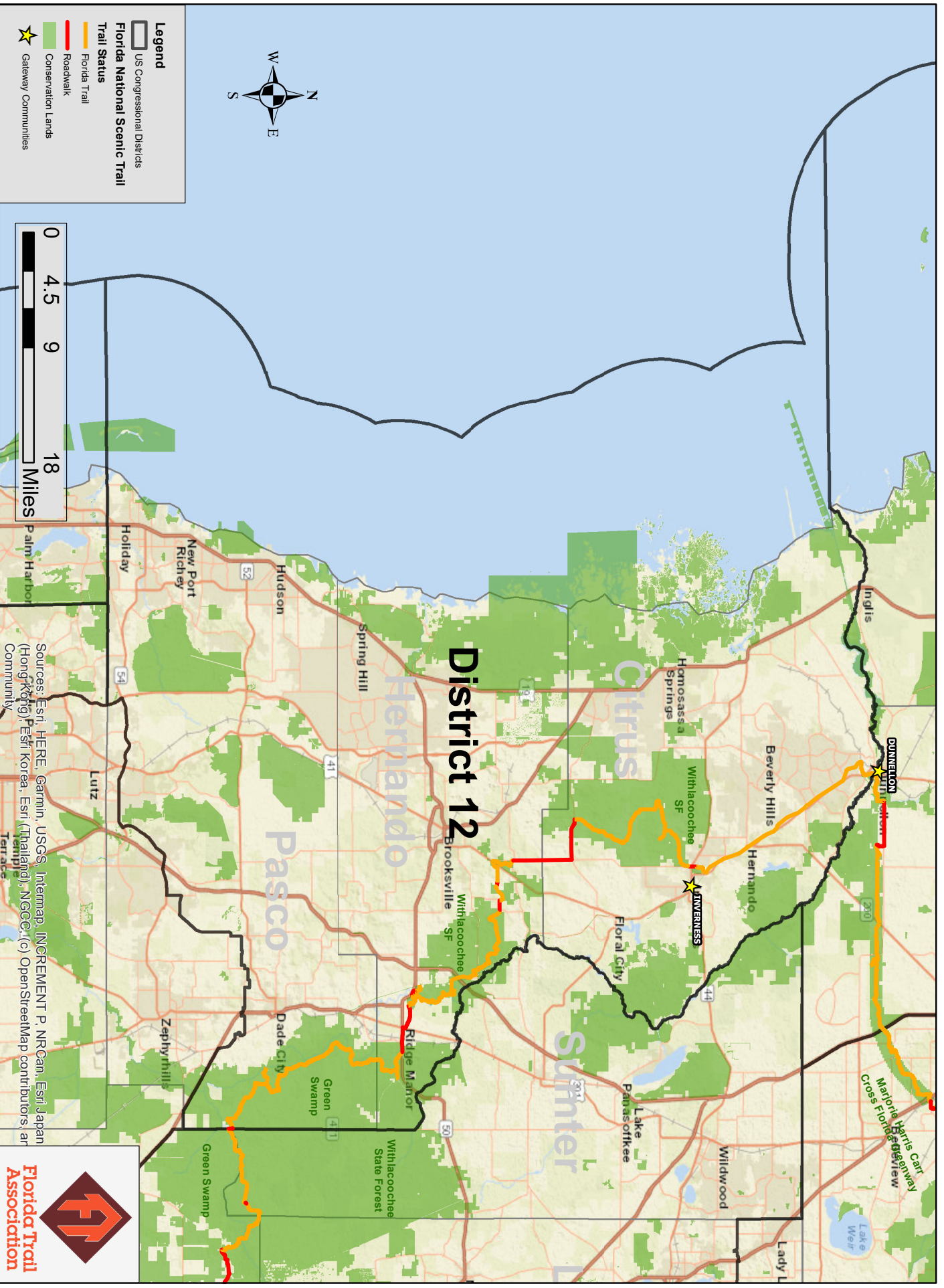
Gateway Communities:

Inverness

A Gateway Community is a designated town in close proximity to the Florida Trail that offers resources for hikers such as accommodations, restaurants, grocery stores or laundry. For the community, it provides publicity, tourism, and economic growth.

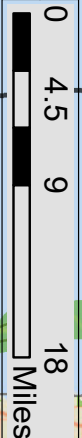


Florida Trail - US House of Representatives (District 12)



Legend

- US Congressional Districts
- Florida National Scenic Trail**
- Trail Status**
- Florida Trail
- Roadwalk
- Conservation Lands
- Gateway Communities



Sources: Esri, HERE, Garmin, USGS, Intelmap, INCREMENT P, NRCan, Esri Japan (Hong Kong), Esri Korea, Esri (Thailand), NGCC, (c) OpenStreetMap contributors, and the Terra





District 18

The Honorable Scott Franklin

The Florida Trail in District 18 highlights the uniquely effective partnership between **Federal**, **State**, and **Private** landowners currently under agreement with the USDA Forest Service to host the Florida National Scenic Trail.

The 159 mile segment of the Florida Trail in District 18 is a public resource that needs your support.

District 18 Constituency Engagement in 2024

Hours Donated in 2024: **1,583**

Miles Driven in 2024: **11,379**

Dollar Value of Volunteer Contributions: **\$54,602**

Florida's outdoor recreation economy generates \$57.8 Billion in added value, and accounts for 3.6% of state GDP.

The Florida Trail in District 18 is hosted by:

- Florida Department of Environmental Protection – **State**
 - Kissimmee Prairie Preserve SP
- South Florida Water Management District – **State**
 - Kissimmee River WMA
 - Starvation Slough WMA
 - Yates Marsh WMA
 - Chandler Slough WMA
 - L1E Canal Levee
 - L2 Canal Levee
- US Army Corps of Engineers – **Federal**
 - Okeechobee North
 - Lake Okeechobee Scenic Trail
- Seminole Tribe of Florida – **Private**
 - Big Cypress Reservation

Gateway Communities:

- Okeechobee, Moore Haven, Clewiston

Proposed Gateway Communities:

- Lakeport

A Gateway Community is a designated town in close proximity to the Florida Trail that offers resources for hikers such as accommodations, restaurants, grocery stores or laundry. For the community, it provides publicity, tourism, and economic growth.



Florida Trail - US House of Representatives (District 18)





District 20

The Honorable Sheila Cherfilus-McCormick

The Florida Trail in District 20 highlight the uniquely effective partnership between **Federal** and **State** landowners currently under agreement with the USDA Forest Service and the Florida Trail Association to host the Florida National Scenic Trail.

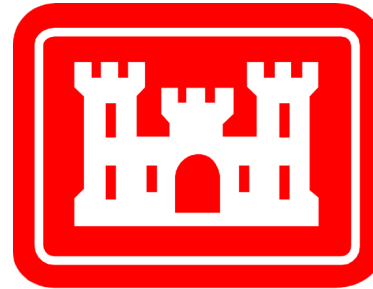
The 40 mile segment of the Florida Trail in District 20 is a public resources that needs your support.

Florida's outdoor recreation economy generates \$57.8 Billion in added value, and accounts for 3.6% of state GDP.

The Florida Trail in District 20 is hosted by:

US Army Corps of Engineers – **Federal**
Lake Okeechobee Scenic Trail
Okeechobee East

South Florida Water Management District – **State**
Miami Canal Levee
L1E Canal Levee



US Army Corps of Engineers®



Florida Trail - 2024 US House of Representatives (District 20)



Esri, HERE, Garmin



District 21

The Honorable Brian Mast

The Florida Trail and Ocean to Lake Trail in District 21 highlight the uniquely effective partnership between **Federal, State** and **County** landowners currently under agreement with the USDA Forest Service and the Florida Trail Association to host the Florida National Scenic Trail and the Ocean to Lake Trail.

The 12 mile segment of the Florida Trail in District 21 is a public resource that needs your support.

District 21 Constituency Engagement in 2024

Hours Donated in 2024: **414**

Miles Driven in 2024: **2,976**

Dollar Value of Volunteer Contributions: **\$14,280**

Florida's outdoor recreation economy generates \$57.8 Billion in added value, and accounts for 3.6% of state GDP.

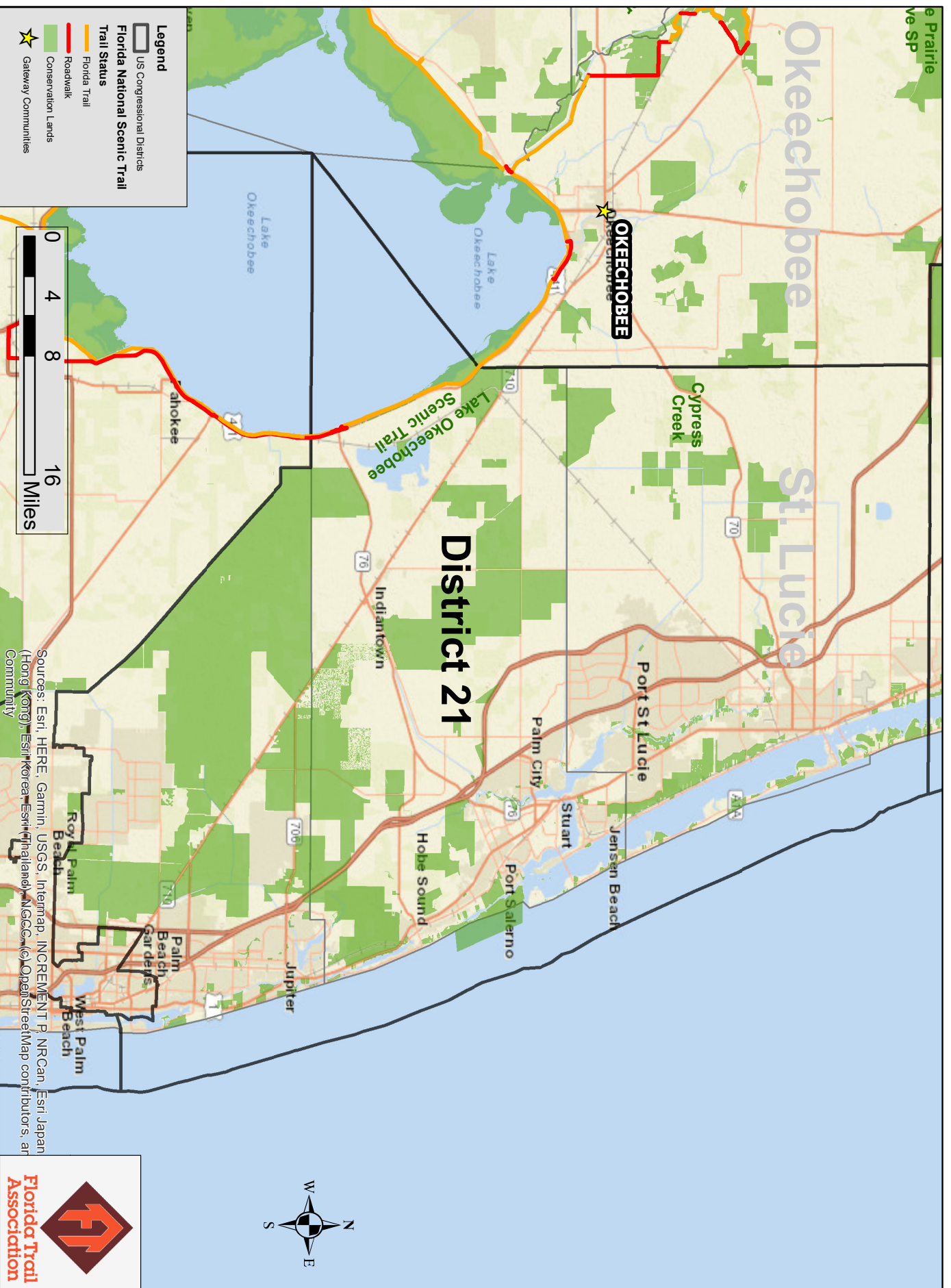


The Florida Trail and Ocean to Lake Trail in District 21 is hosted by:

- US Army Corps of Engineers – **Federal**
 - Lake Okeechobee Scenic Trail
- South Florida Water Management District – **State**
 - Dupuis Reserve WMA
 - Cypress Creek and Loxahatchee River MA
- Martin County – **County**
 - South Fork Addition
- Palm Beach County – **County**
 - Hungryland Slough Natural Area
 - Loxahatchee Slough Natural Area
 - River Bend Park
- Florida Department of Environmental Protection – **State**
 - Seabranche Preserve SP
 - Jonathan Dickinson SP
- Florida Fish and Wildlife Conservation Commission – **State**
 - J. W. Corbett WMA



Florida Trail - US House of Representatives (District 21)





District 26

The Honorable Mario Diaz-Balart

The Florida Trail in District 26 highlight the uniquely effective partnership between **Federal** landowners currently under agreement with the USDA Forest Service to host the Florida National Scenic Trail.

The 38 mile segment of the Florida Trail in District 26 is a public resource that needs your support.

District 26 Constituency Engagement in 2024

Hours Donated in 2024: **1,485**

Miles Driven in 2024: **10,679**

Dollar Value of Volunteer Contributions: **\$51,241**

Florida's outdoor recreation economy generates \$57.8 Billion in added value, and accounts for 3.6% of state GDP.

The Florida Trail in District 26 is hosted by:

USDI National Park Service – **Federal**
Big Cypress National Preserve

Proposed Gateway Communities:
Ochopee

A Gateway Community is a designated town in close proximity to the Florida Trail that offers resources for hikers such as accommodations, restaurants, grocery stores or laundry. For the community, it provides publicity, tourism, and economic growth.

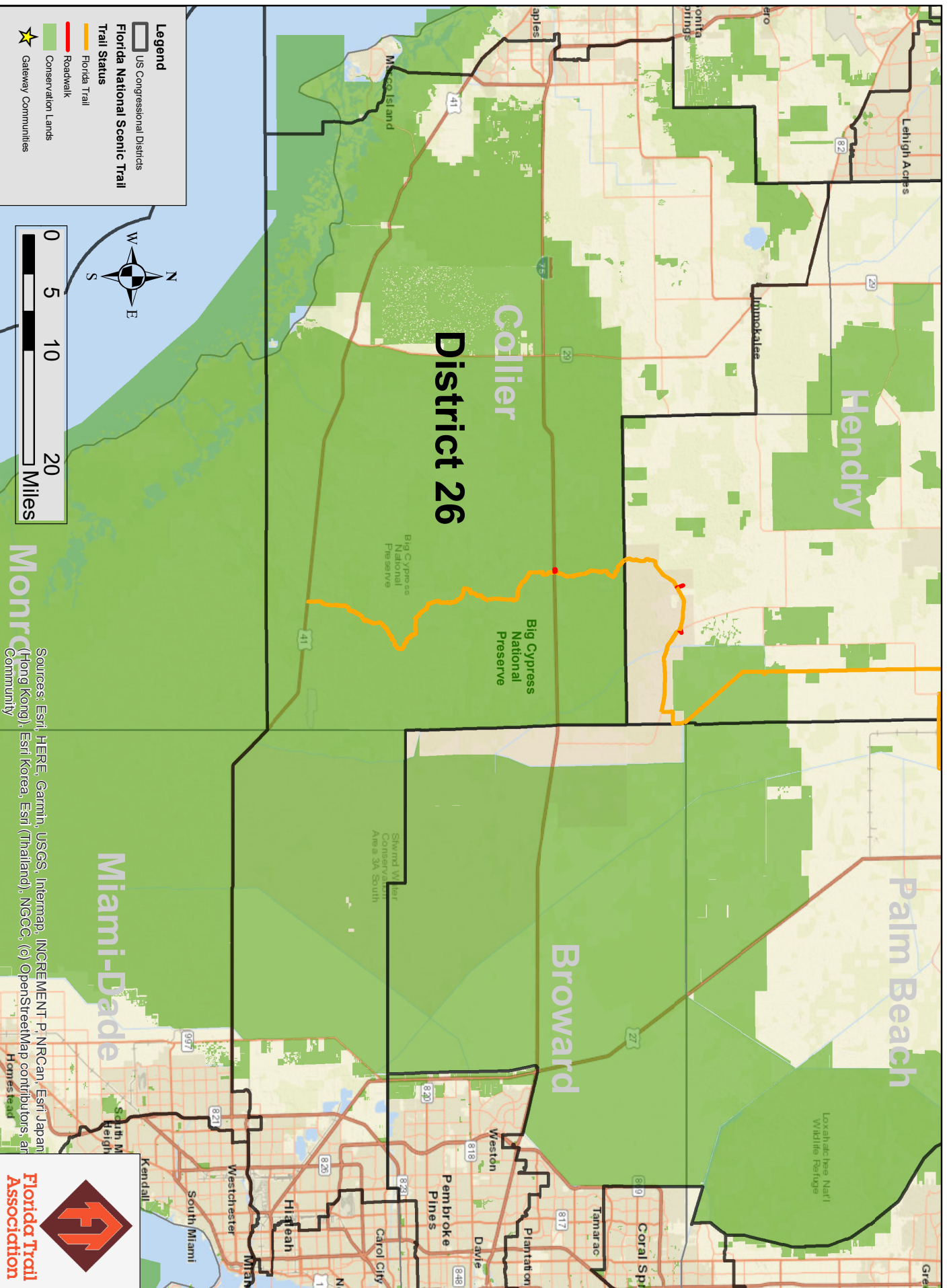


The Ochopee Post Office is the smallest post office building in the United States.



Photo courtesy of olekinderhook on Wikipedia.com

Florida Trail - US House of Representatives (District 26)



Sources: Esri, HERE, Garmin, USGS, Intermap, INCREMENT P, NRCan, Esri Japan (Hong Kong), Esri Korea, Esri (Thailand), NGCC, (c) OpenStreetMap contributors, and





Meet the Florida Trail Association

We are the Florida Trail Association, the 501(c)(3) nonprofit responsible for developing, maintaining, protecting, & promoting a network of hiking trails throughout the state, including the unique Florida National Scenic Trail, commonly known as the “Florida Trail,” along with our primary agency partner, the U.S. Forest Service. The Florida National Scenic Trail is a 1,500 mile federally designated trail beginning at Big Cypress National Preserve and ending at Gulf Islands National Seashore.

Our vision is a continuous well-maintained, protected network of hiking trails on public lands that highlight the unique natural, scenic, cultural, and historic places in Florida. These trails are open to all, connecting the diverse and growing population to opportunities for recreation and meaningful volunteer work in Florida.

We are: Stewards, Dedicated, Inclusive, Adaptable, Respectful, Open, Fair, & Learners. We are constantly open to advancing our education and sharing our experiences.